

# NEXIO<sup>™</sup>



## NEXIO Config Installation and User Guide







# NEXIO Config

---

## Installation and User Guide

**Part No. 175-100142-00**

**August 2009**





**Harris Corporation**  
**Broadcast Communications**  
**Division**  
4393 Digital Way  
Mason, OH USA 45040

Copyright © 2009 Harris Corporation. All rights reserved. This publication supersedes all previous releases. No part of this documentation may be reproduced in any form or by any means or used to make any derivative work without permission from Harris Corporation.

Harris Corporation reserves the right to revise this documentation and to make changes in content from time to time without obligation on the part of Harris Corporation to provide notification of such revision or change.

**UNITED STATES GOVERNMENT LEGEND** *If you are a United States government agency, then this documentation and the software described herein are provided to you subject to the following:*

All technical data and computer software are commercial in nature and developed solely at private expense. Software is delivered as "Commercial Computer Software" as defined in DFARS 252.227-7014 (June 1995) or as a "commercial item" as defined in FAR 2.101(a) and as such is provided with only such rights as are provided by Harris' standard commercial license for the Software. Technical data is provided with limited rights only as provided in DFAR 252.227-7015 (Nov 1995) or FAR 52.227-14 (June 1987), whichever is applicable. You agree not to remove or deface any portion of any legend provided on any licensed program or documentation contained in, or delivered to you in conjunction with, this User Guide.

CCS, CCS CoPilot, CCS Navigator, CCS Pilot, Command Control System, CineTone, CinePhase, CineSound, DigiBus, DigiPeek, Digital Glue, DigiWorks, DTV Glue, EventWORKS, EZ HD, Genesis, HDTV Glue, Image Q, Inca, Inca Station, InfoCaster, Inscribe, Inscribe CG—FX, Integrator, Integrated Content Environment (ICE), LeFont, Leitch, LogoMotion, MediaFile, Mix Box, NEO, the NEO design, NEOSCOPE, NewsFlash, NEXIO, NEXIO Pilot, Opus, Panacea, PanelMapper, Playlist, Portal, PROM-Slide, RAIDsoft, RouterMapper, RouterWorks, Signal Quality Manager, SpyderWeb, SuiteView, TitleMotion, UNIFRAME, Velocity, VelocityHD, VideoCarte, Videotek, and X75 are trademarks of Harris Corporation which may be registered in the United States, Canada, and/or other countries.

Windows is a registered trademark of Microsoft Corporation. AMD and Operton are trademarks of Advanced Micro Devices, Inc. Dolby Digital is a registered trademark of Dolby Laboratories.

All other trademarks are the property of their respective holders.

August 2009





# Contents

<b>About This Guide</b>	1
Intended Audience	1
Finding Specific Information in This Guide	2
Writing Conventions	2
Related Documentation	3
Obtaining Documentation	4
Purchasing Documents	7
Unpacking/Shipping Information	8
Unpacking a Harris Product	8
Returning a Harris Product	8
Technical Support	9

<b>Chapter 1</b>	<b>NEXIO Config Installation</b>	11
	Installing NEXIO Config	11

<b>Chapter 2</b>	<b>Using NEXIO Config</b>	17
	NEXIO Config Overview	17
	Starting NEXIO Config	18
	Working with Configuration Templates	19
	NEXIO Config Windows	21
	Node/Domain	22
	System Master	23



IP Config .....	25
Video Options .....	28
Audio Options .....	33
FTP .....	36
INSCRIBER .....	38
LLM .....	40
LLM1 .....	42
MPEG .....	44
mxHandler .....	46
Other .....	48

**Appendix A    Channel Configurations, Record Format Settings, and AES/EBU Color Legend .....**

Overview .....	51
Channel Configurations and Features .....	51
2 Channel Modes without Expander Client .....	52
3 Channel Modes without Expander Client .....	53
4 Channel Modes without Expander Client .....	54
6 Channel Modes without Expander Client .....	55
2 Channel Modes with Expander Client .....	56
3 Channel Modes with Expander Client .....	57
4 Channel Modes with Expander Client .....	58
6 Channel Modes with Expander Client .....	59
Record Format and ARC Settings .....	60
AES/EBU Audio Color Legend .....	62

**Index..... 65**



# About This Guide

*About This Guide* provides an overview of this guide, describes guide conventions, and tells you where to look for specific information. This section also gives you important information on unpacking and shipping your Harris product.

This guide introduces and describes procedures for installing and using the NEXIO Config application.



*If the information in the release notes shipped with your product differs from the information in this guide, follow the instructions in the release notes.*

## Intended Audience

This guide is intended for users installing and operating the NEXIO Config application. NEXIO Config can be used with the following non AVI-Intra systems:

- NEXIO AMP NX3601HDX
- NEXIO AMP NX3601HDI
- NEXIO XS NX3600HDX (with 64-bit operating system)
- NEXIO XS NX3600HDI (with 64-bit operating system)



## Finding Specific Information in This Guide

This table shows the location of specific information in this guide.

**Table 1-1** Finding Specific Information in this Guide

If you are looking for	Go to
Installing NEXIO Config	<a href="#">Chapter 1: “NEXIO Config Installation” on page 11</a>
Information on how to install NEXIO Config	<a href="#">Chapter 1: “NEXIO Config Installation” on page 11</a>
Information on using NEXIO Config	<a href="#">Chapter 2: “Using NEXIO Config” on page 17</a>
Detailed tables on channel configurations and available features, record formats, or an AES/EBU color legend	<a href="#">Appendix A: “Channel Configurations, Record Format Settings, and AES/EBU Color Legend” on page 51</a>

## Writing Conventions




This guide uses the following writing conventions.

**Table 1-2** Writing Conventions

Convention	Definition
<b>Bold</b>	Indicates dialog box, property sheet, field, button, check box, list box, combo box, menu, submenu, window, list, and selection names.
<i>Italics</i>	Indicates e-mail addresses, names of books and publications, and first instances of new terms and specialized words that need emphasis.
CAPS	Indicates a specific key on the keyboard, such as ENTER, TAB, CTRL, ALT, DELETE.
Code	Indicates variables or command-line entries, such as a DOS entry or something you type into a field.



Table 1-2 Writing Conventions

Convention	Definition
>	Indicates the direction of navigation through a hierarchy of menus and windows.
<a href="#">hyperlink</a>	Indicates a jump to another location within the electronic document or elsewhere.
<a href="#">Internet address</a>	Indicates a jump to a Web site or URL.
 <i>Note</i>	Indicates important information that helps to avoid and troubleshoot problems.
 <b>Caution</b>	Indicates important information that if not followed could cause system problems.
 <b>Warning</b>	Indicates information that if not followed could prevent system operation or cause it damage.

Related Documentation

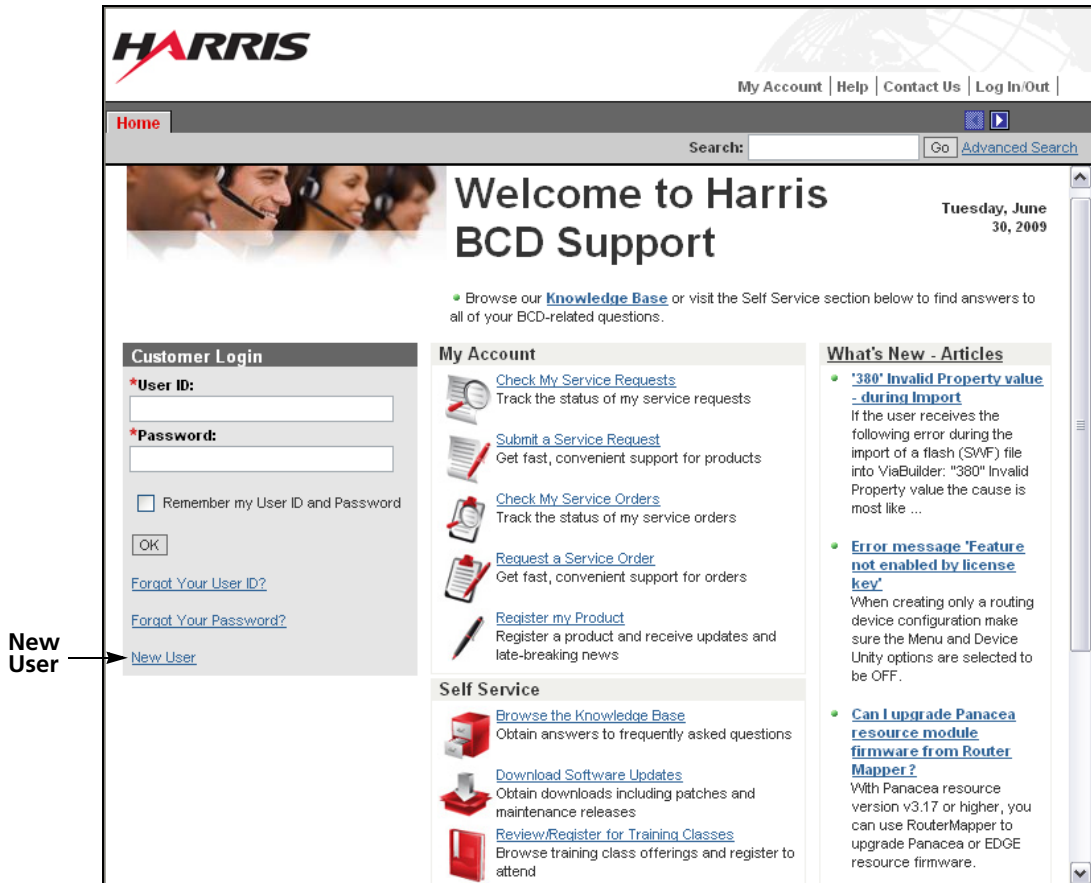
- **NEXIO NX3601HDX Installation and User Guide** (175-000406-05 Rev A)
- **NEXIO NX3601HDI Installation and User Guide** (175-000407-04 Rev B)
- **NEXIO Low Level Module User Guide** (175-000308-03)
- **NEXIO Safety & Compliance Information** (175-000364-02)
- **NEXIO NXOS User Guide** (175-000307-04 Rev A)
- **Software License Key Registration Card** (158-100010Q00)



## Obtaining Documentation

Manuals, User Guides, and other documents can be viewed or downloaded from the Harris website at <http://support.broadcast.harris.com>.

The **Welcome to Harris BCD Support** web page appears (see Figure 1).

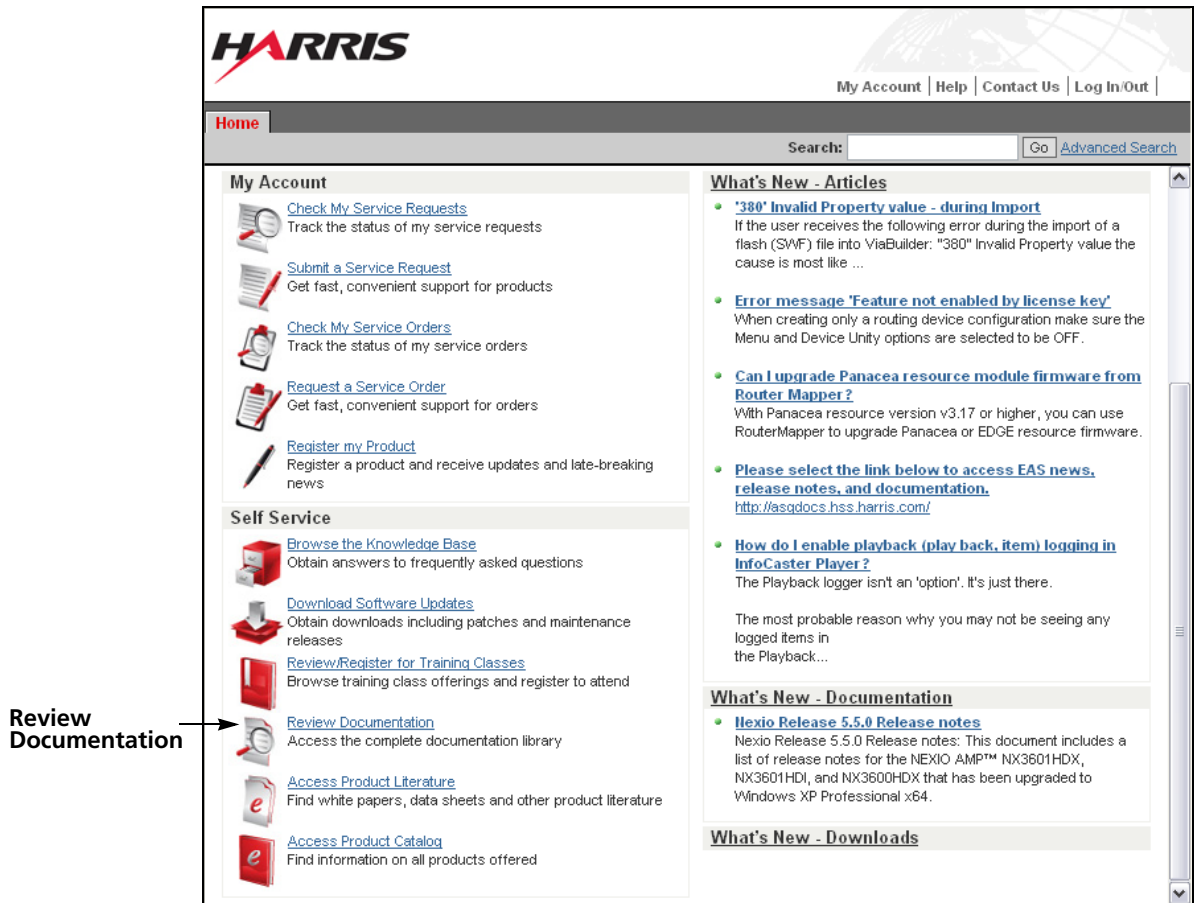


**Figure 1** Welcome to Harris BCD Support

- 1 In the **Customer Login** area, enter your **User ID** and **Password**, and click **Submit**. If you do not sign in, you are redirected to **Customer Login**.  
OR  
Click **New User** to register with Harris.



The **Harris BCD Support Home** web page appears (see [Figure 2](#)).

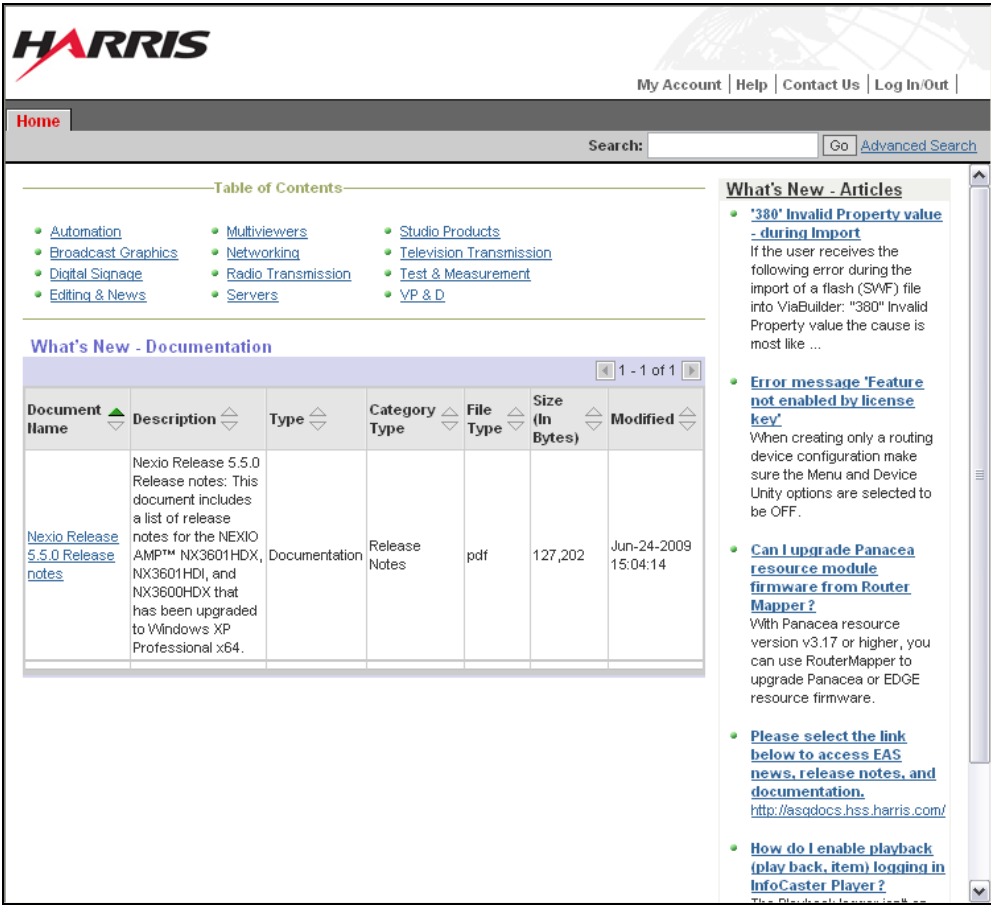


**Figure 2** Harris BCD Support Home

2 Click **Review Documentation**.



The documentation **Table of Contents**, and **What's New - Documentation** web page appears (see [Figure 3](#)).




**Figure 3** Documentation Table of Contents

- 3 In the **Table of Contents** list, click the category of the document to display the available documents.



The available documents for the selected category appear (see [Figure 4](#)).



[My Account](#) | [Help](#) | [Contact Us](#) | [Log In/Out](#)

Home

Search:

Go

[Advanced Search](#)

>	<a href="#">NEXIO NX1000LRE Hardware Manual</a>		Documentation	Operations-Manuals	pdf	681,241	Jun-05-2009 03:12:05
>	<a href="#">NEXIO NX1000LRE Installation Quick Start</a>		Documentation	Reference	pdf	248,875	Jun-05-2009 03:12:05
>	<a href="#">NEXIO NX1010 Series Hardware Guide for NX1010MGX, NX1010MIOH, NX1010FCP, NX1010PTCD</a>	This manual describes features, and provides procedures for installing and using the NEXIO NX1010 series. This series is based on the 1UAG2 platform. The NX1010 series of servers includes the NX1010MGX, NX1010MIOH, NX1010FCP, and NX1010PTCD. Sample topolo	Documentation	Operations-Manuals	pdf	2,363,853	Jun-05-2009 03:14:19

Figure 4 Available Documents

- 4 Click on the title of the desired document, and then click **Open** to view the document.

OR

Click **Save** and select a location to which to download the document.

**Tip:** If you are having trouble finding a document, enter the title of the document or a keyword in the **Search** box, and then click **Go**.

Purchasing Documents

Additionally, you can purchase product documentation on our [Harris E-commerce site](#), or contact your Harris customer service representative to request a document.



---

## Unpacking/ Shipping Information

The following sections describe:

- [Unpacking a Harris Product](#)
- [Returning a Harris Product](#)

### Unpacking a Harris Product

All Harris NEXIO products have been carefully inspected, tested and calibrated before shipment to ensure stable and trouble-free service.

- 1 Check the equipment for any visible damage that may have occurred during transit.
- 2 Confirm that you have received all items listed on the packing list.
- 3 Contact your Harris NEXIO dealer if any item on the packing list is missing.
- 4 Contact the carrier if any item is damaged.
- 5 Remove all packaging material from the product and its associated components before you install the unit.

### Returning a Harris Product

In the unlikely event that a Harris product fails to operate properly, contact the Harris NEXIO Customer Service Department to obtain a Return Authorization (RA) number, then send the unit back for servicing. Include the RA number on the outside of the return box.

Keep at least one set of original packaging in the event that a product needs to be returned for service. If the original package is not available, you can purchase replacement packaging from Harris Corporation. Otherwise, you can supply your own packaging as long as it meets the following criteria:

- The packaging must be able to withstand the product's weight.
- The product must be held rigid within the package.
- There must be at least 2 in. (5 cm) of space between the product and the container.
- The corners of the product must be protected.

If the product is still within the warranty period, Harris Corporation will return it to you by prepaid ground shipping after servicing.



# Technical Support

Technical support is available 24 hours a day, 7 days a week. You can contact technical support by phone or e-mail.

## Harris Broadcast Division Support

- **Toll Free:** +1 (888) 534-8246
- **Email:** BCDService@harris.com

## Video Server Division

- <http://www.broadcast.harris.com/products/servers>
- **Email:** LTIServiceServers@harris.com

## U.S., Canada, Central America, and Latin America (CALA)

Video Processing, Distribution, Servers, Storage, News, Insciber and Videotek

- **Call:** 1-888-534-8246
- **Fax:** 1-416-445-9020
- **Email:** BCDService@harris.com

## Europe, Middle East, and Africa

24 hours a day, 7 days a week

Regular Business Hours (9am to 5pm, Monday to Friday)

24/7 Support line: +44-118-964-8100

- **Fax:** +44-118-964-8054
- **Email:**
  - **Infrastructure products:** Service.europe@harris.com
  - **RMA's:** RMArequest.europe@harris.com
  - **DAM Support:** HClassDAMsupport.emea@Harris.com
  - **ADC Automation:** HasHelp@Harris.com
  - **D Series Support:** DALSupport@Harris.com
  - **Transmitters:** SupportTX.EMEA@Harris.com



### **Asia, Pacific Rim**

24 hours a day, 7 days a week

Regular Business Hours (9am to 5pm HKT Monday to Friday)

- **Call:** +852-2776-0628
- **After-Hour Hotline:** 1-888-534-8246
- **Fax:** +852-2776-0227
- **Email:** [BCDSERVICE@harris.com](mailto:BCDSERVICE@harris.com)



# 1 NEXIO Config Installation

---

## Installing NEXIO Config

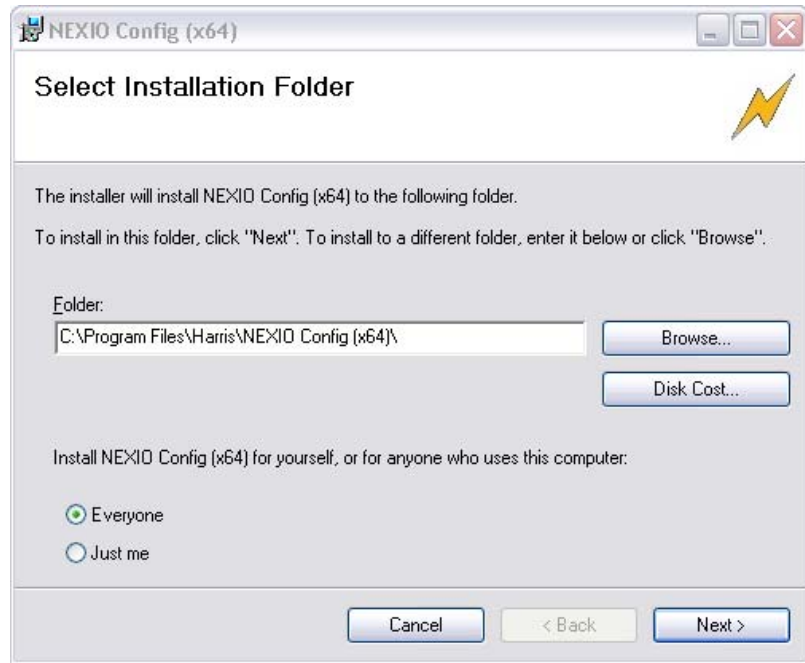
NEXIO Config is installed as part of the full NEXIO AMP Release 5.5.1 installation process. If you need to install NEXIO Config separately, follow the procedure below:

### To install NEXIO Config

- 1 Insert the NEXIO AMP Release 5.5.1 USB stick.
- 2 Navigate to the appropriate drive.
- 3 Double-click the **StartHere.html** file.  
The **NEXIO AMP 5.5.1** splash screen appears.
- 4 Click on **Explore USB drive and install software**.
- 5 Open the **NEXIO5.5.1\_AMP** folder.
- 6 Open the **NEXIOConfig** folder.
- 7 Double-click **NxConfigSetup.msi**.



The **NEXIO Config (x64) — Select Installation Folder** dialog box appears (see [Figure 1-1](#)).

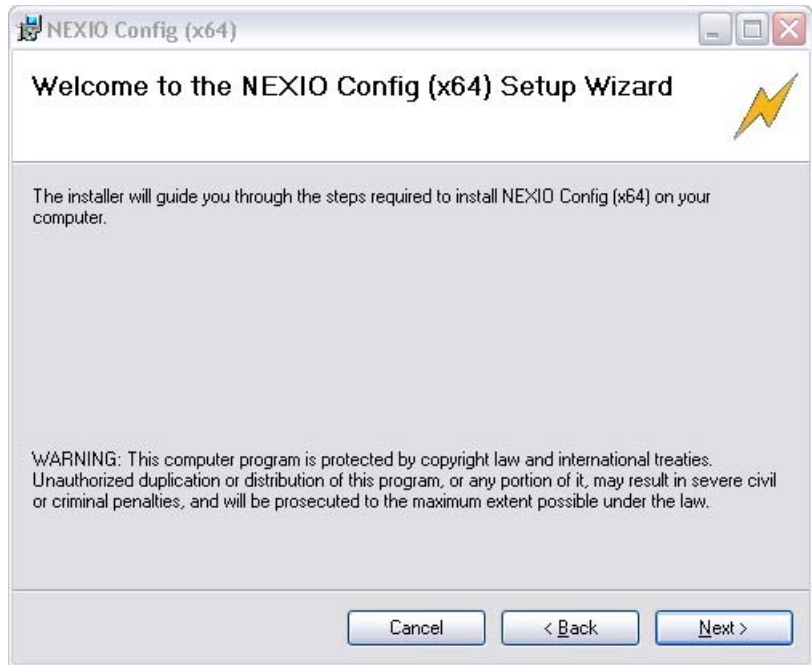


**Figure 1-1** NEXIO Config (x64) — Select Installation Folder

- 8** Click **Next** to install NEXIO Config into the displayed folder, or click **Browse** to install it into a different folder.



The **NEXIO Config (x64) — Welcome to the NEXIO Config (x64) Setup Wizard** dialog box appears (see [Figure 1-2](#)).

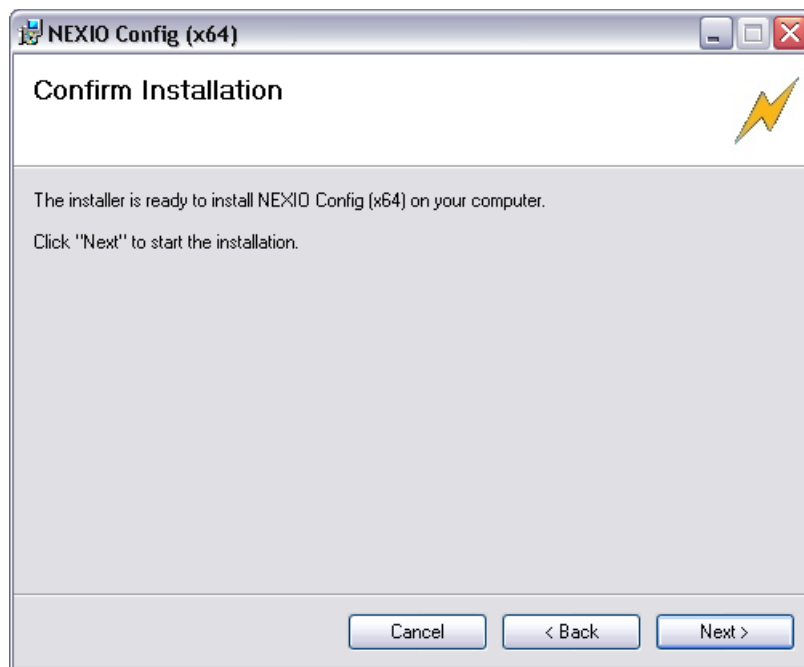


**Figure 1-2** NEXIO Config (x64) — Welcome to the NEXIO Config (x64) Setup Wizard

**9** Click **Next**.



The **NEXIO Config (x64) — Confirm Installation** dialog box appears (see [Figure 1-3](#)).

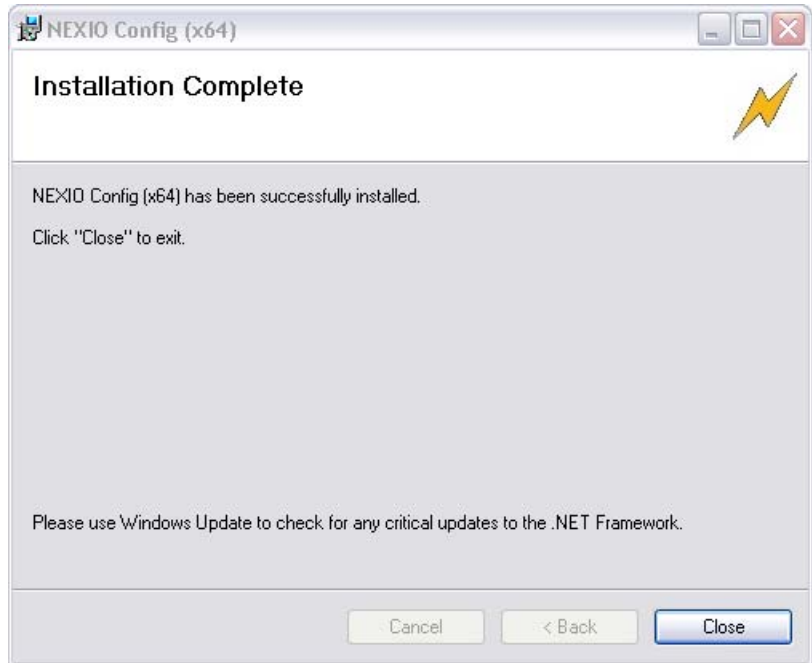


**Figure 1-3** NEXIO Config (x64) — Confirm Installation

- 10 Click **Next** to begin the installation.



Once the installation is complete, the **NEXIO Config (x64) — Installation Complete** dialog box appears (see [Figure 1-4](#)).



**Figure 1-4** NEXIO Config (x64) — Installation Complete

**11** Click **Close**.

The **NEXIO Config** icon appears on the Desktop.







# 2

## Using NEXIO Config

---

### NEXIO Config Overview

NEXIO Config enables you to easily configure all of the settings for your NEXIO AMP™ servers. You can create and save these settings in configuration templates to use at any time.

In this chapter you will learn how to work with configuration templates. You will also be provided detailed information on each NEXIO Config window.

This chapter includes the following sections:

- [Starting NEXIO Config](#)
- [Working with Configuration Templates](#)
- [NEXIO Config Windows](#)



*NEXIO Config is intended to be run while the LLM is not running. Most changes made within NEXIO Config require a restart of the LLM for the changes to take effect.*



# Starting NEXIO Config

## To start NEXIO Config

- Double-click on the **NEXIO Config** desktop shortcut (see [Figure 2-1](#)).

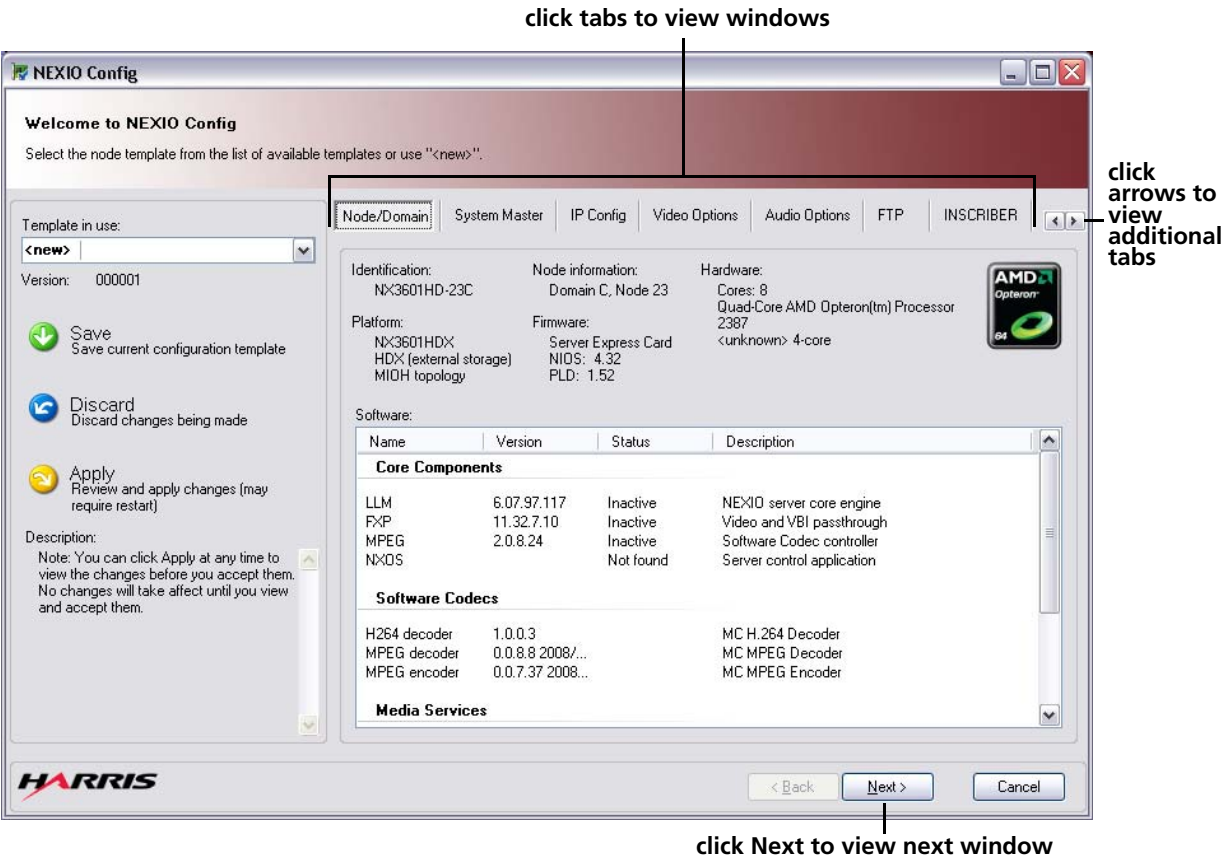


**Figure 2-1** NEXIO Config Desktop Shortcut



*If you have not registered your software using your Software License Key (SLK), a message appears telling you to contact Harris BCD Support to obtain a license. See [Technical Support on page 9](#) for contact information.*

The **NEXIO Config** Node/Domain window appears (see [Figure 2-2](#)).



**Figure 2-2** NEXIO Config Node/Domain Window



## Working with Configuration Templates

NEXIO Config allows you to select an existing template, or create a new template to use for your configuration. You can easily apply and discard changes, and save your configuration template using the following icons:



**Save** — displays the **Save Current Template** dialog box where you can name and save the configuration template.



**Discard** — discards all changes made to the configuration template.



**Apply** — displays the **Apply Changes** dialog box so that you can view the changes made to the configuration template. No changes will be applied until you click **OK**.

### To create or modify a configuration template

- 1 In the **Template in use** list, select the desired template, or select **<new>** to create a new template.
- 2 Click the desired window tab or click **Next** to view the current settings.
- 3 Make the desired changes to each NEXIO Config window.

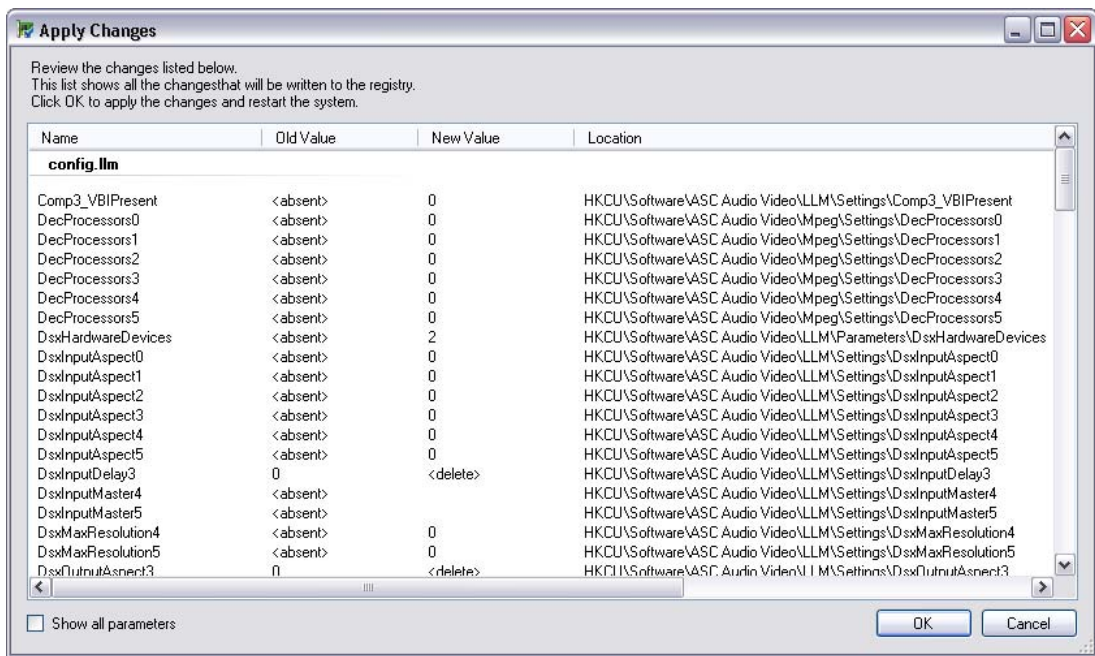


*You can click **Discard** at anytime to discard all the changes made to the selected configuration template.*

- 4 Click **Apply** to view the changes.



The **Apply Changes** dialog box appears (see [Figure 2-3](#)).



**Figure 2-3** NEXIO Config — Apply Changes

- 5 Review all of the changes in the list.
- 6 Click **OK** to write the changes to the registry and restart your system.



---

## NEXIO Config Windows

The following sections describe the settings for each of the NEXIO Config windows:

- [Node/Domain on page 22](#)
- [System Master on page 23](#)
- [IP Config on page 25](#)
- [Video Options on page 28](#)
- [Audio Options on page 33](#)
- [FTP on page 36](#)
- [INSCRIBER on page 38](#)
- [LLM on page 40](#)
- [LLM1 on page 42](#)
- [MPEG on page 44](#)
- [mxHandler on page 46](#)
- [Other on page 48](#)



## Node/Domain

The NEXIO Config **Node/Domain** window (Figure 2-4) provides the following information. No changes can be made in this window.

- **Identification** — displays the host name of the computer
- **Node information** — indicates the NEXIO domain to which this computer belongs and its node number in that domain
- **Hardware** — indicates the number and type of processors in the computer
- **Platform** — identifies the NEXIO server platform and its connection to the media storage system
- **Firmware** — indicates the version of firmware loaded on the computer's video hardware (this information is typically not retrievable if the LLM is currently running)
- **Software** — lists the installed media services and core components

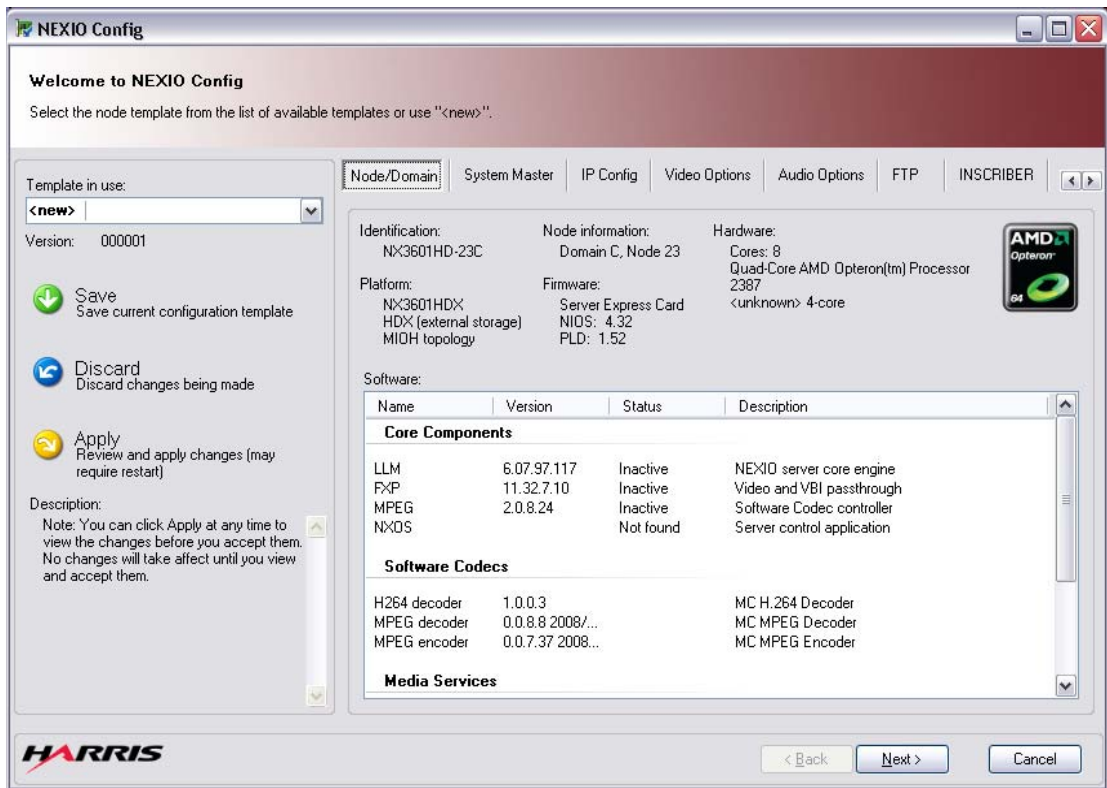


Figure 2-4 NEXIO Config — Node/Domain



## System Master

The NEXIO Config **System Master** window (Figure 2-5) allows you to select the configuration, and include or exclude features.

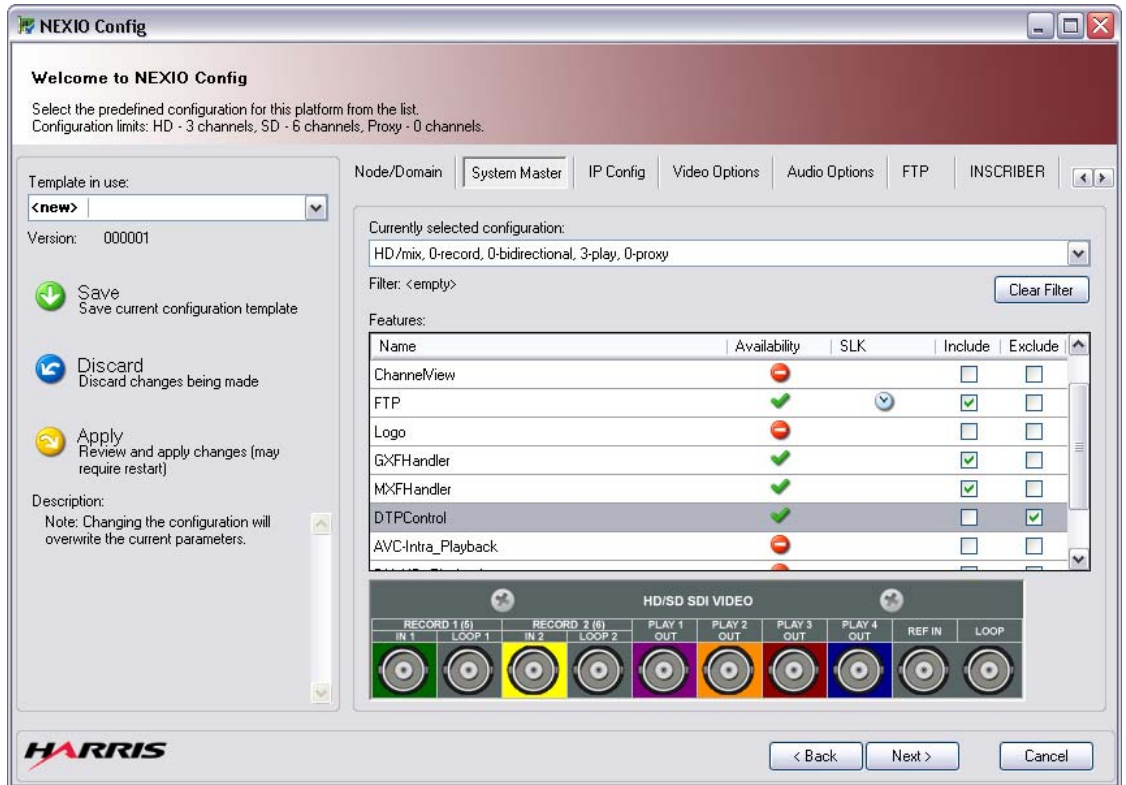


Figure 2-5 NEXIO Config — System Master

### To select a configuration and include or exclude features


- 1 In the **Currently selected configuration** list, select the configuration for your system.
- 2 In the **Features** list, select the check boxes for the features that you want to include, and clear the check boxes for the features that you want to exclude.





The **Filter** line underneath the **Currently selected configuration**, indicates which features are included and excluded. Click **Clear Filters** to clear all of the included and excluded features.



The **Availability** column indicates whether or not a feature is available for the current configuration. The availability icons are described below:

 **green check mark** — indicates that the feature is available for the current configuration.

 **red minus sign** — indicates that the feature is not available for the current configuration.

 **purple question mark** — indicates that the feature has no meaning in the current configuration.

See [Appendix A on page 51](#) for a list of the [Channel Configurations and Features](#) available in the [System Master](#) window.



*The DNxHD Playback and 1080 Progressive features are not available in this release of NEXIO Config and are scheduled for future releases.*



## IP Config

The NEXIO Config **IP Config** window (Figure 2-6) allows you to specify the following network settings:

- Server and Order Configuration
- Network Settings
- LLM Domain and Node Settings
- High-Res Network Server (MIOH)
- Low-Res Network Server (PRXH)

**Welcome to NEXIO Config**  
Setup the node domain and network settings.

Template in use:

Version: 000001

Save  
Save current configuration template

Discard  
Discard changes being made

Apply  
Review and apply changes (may require restart)

Description:  
Double-click in any field to access the IP Config dialog box for the selected Network Connection.

Node/Domain | System Master | **IP Config** | Video Options | Audio Options | FTP | INSCRIBER

**Server and Order Configuration**

Actual Name:  Order Number:  Platform Type:

Server Name:

**Network Settings**

	Adapter	Current IP	Subnet	Role	Connection Name
▶	NVIDIA nFor...	172.22.4.23	255.255.255.0	Not Assign...	Ethernet 1
	NVIDIA nFor...	172.22.5.23	255.255.255.0	Not Assign...	Ethernet 2

**LLM Domain and Node Settings**

Domain Letters:  Node Number:

**High-Res Network Server (MIOH)**

Host 1:  Host 2:

**Low-Res Network Server (PRXH)**

Host 1:  Host 2:

Figure 2-6 NEXIO Config — IP Config



To specify IP configuration settings

- 1 If you want to change the server name, in the **Server Name** box, type a new name for the server, and then click **Set Server Name**.

The **Set Server Name** dialog box appears asking you if you want to change the name (see [Figure 2-7](#)).

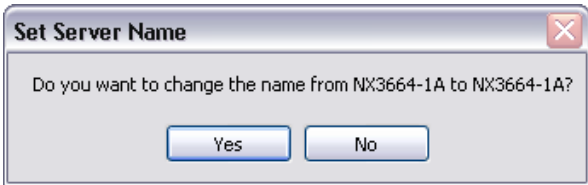


Figure 2-7 NEXIO Config — Set Server Name

- 2 Click **Yes** to change the name.
- 3 In the **Order Number** box, type the order number only if instructed to do so by Harris BCD Support.
- 4 In the **Platform Type** list, change the default platform type only if instructed to do so by Harris BCD Support. The Platform Type is read by the registry and should match the Platform information shown in the Node/Domain window.

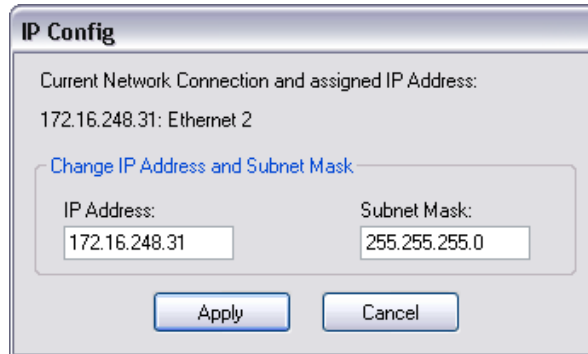
The **Network Settings** area shows the current IP address, the subnet address, the role, and the connection name of the selected adapter. The arrow to the left of the Adapter column indicates which adapter is selected (see [Figure 2-8](#)).

Network Settings					
	Adapter	Current IP	Subnet	Role	Connection Name
▶	Intel(R) PRO...	172.16.248.31	255.255.255.0	Not Assign...	Ethernet 2
	NVIDIA nFor...	192.168.90.1	255.255.255.0	NX LAN 1	Ethernet 1

Figure 2-8 NEXIO Config — Network Settings

- 5 To change the current IP address or subnet mask, double-click in any of the **Network Settings** boxes to select that adapter and display the **IP Config** dialog box (see [Figure 2-9](#)).





**Figure 2-9** NEXIO Config — IP Config

- 6 In the **IP Address** box, type the new IP address.
- 7 In the **Subnet Mask** box, type the new subnet mask.
- 8 Click **Apply** to save the changes and return to the IP Config window.
- 9 In the **LLM Domain and Node Settings** area, type the **Domain Letters** and **Node Number** in the appropriate boxes.
- 10 If the computer is connected to a High-Res Network Server (MIOH), in the **High-Res Network Server (MIOH)** area, type the Host 1 address and the Host 2 address (if configured for dual paths) in the appropriate boxes.
- 11 If the computer is connected to a Low-Res Network Server (PRXH), in the **Low-Res Network Server (PRXH)** area, type the Host 1 address and the Host 2 address (if configured for dual paths) in the appropriate boxes.

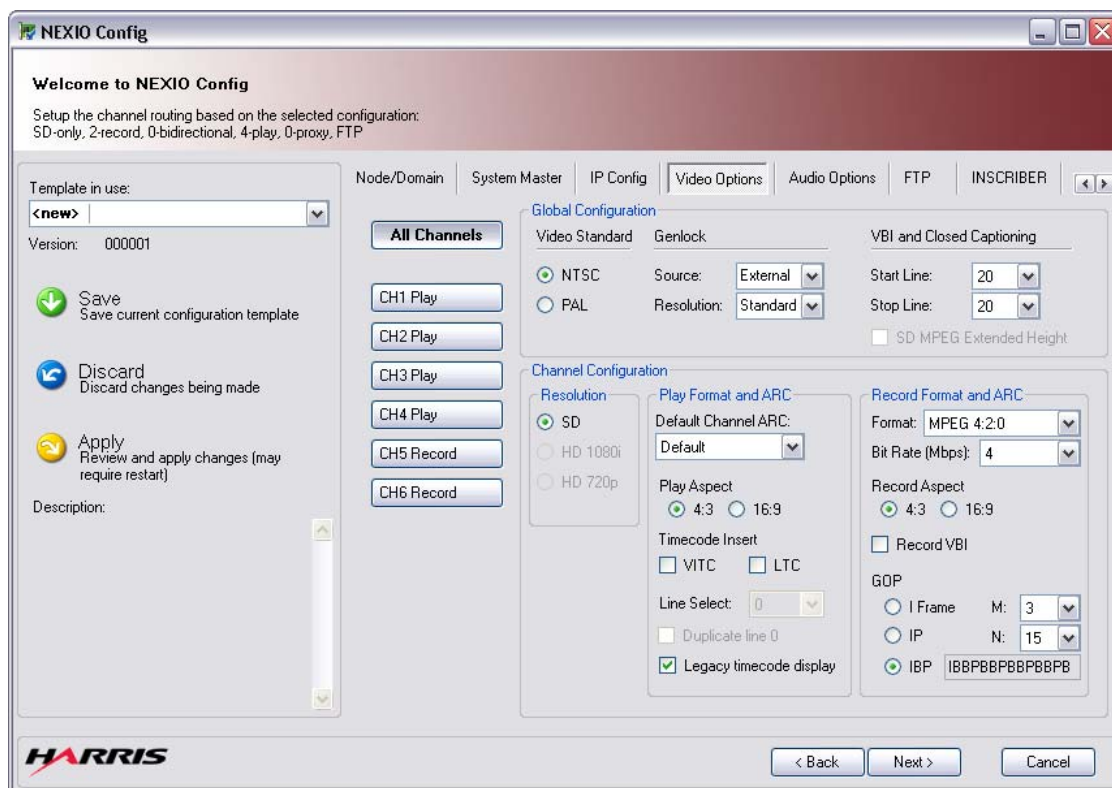


*The Low-Res Network Server can be an NX2101LRS platform in addition to the indicated NX1000PRXH platform.*



## Video Options

The NEXIO Config **Video Options** window (Figure 2-10) allows you to specify the Global Configuration and the Channel Configuration for your system.



**Figure 2-10** NEXIO Config — Video Options

## To specify video options

- 1 Click **All Channels** to set the video configuration for all of the channels, or click the desired channel (e.g., **CH1 Play**) to configure a channel individually.
- 2 In the **Global Configuration** area, set the following options (described below):
  - [Video Standard](#)
  - [Genlock](#)
  - [VBI and Closed Captioning](#)



## Video Standard

- ❑ In the **Video Standard** area, select the video standard (i.e., NTSC or PAL).

## Genlock

- ❑ In the **Genlock** area, select settings to lock video outputs to external reference sources.

The available **Source** settings are:

- **Internal**—This uses the internal clock of the server rather than referencing to an external reference source.
- **Input1**—This references the output video of all channels to the timing derived from video input 1.
- **External**—This references the video outputs to the external reference signal applied to the REF IN connector. This is the recommended setting.

The available **Resolution** settings are:

- **Standard**—Use for bi-level 525 or 625 line reference.
- **HD1080**—Use for tri-level 1080i reference.
- **HD720**—Use for tri-level 720p reference.

## VBI and Closed Captioning

- a In the **VBI and Closed Captioning** area, set the start and stop lines (i.e., 7 through 23) for stored closed captioning and other ancillary data. This data is stored as clip essence.
- b Select the **SD MPEG Extended Height** check box to compress the ancillary data. This only applies to SD-only, MPEG-2 configurations.

- 3 In the **Channel Configuration** area, set the following options (described below):

- Resolution
- Play Format and ARC
- Record Format and ARC



## Resolution

- In the **Resolution** area, select the desired resolution for the channel configuration (i.e., SD, HD 1080i, or HD 720p).

## Play Format and ARC

- a Click the appropriate **Play Aspect** option, and then in the **Default Channel ARC** list select the ARC play format. For details on selecting the Play Aspect and Default Channel ARC see the appropriate section below:

### SD 16:9 Aspect Ratio Output

For channels configured to play out SD media, it is important to identify the aspect ratio of the video output. If a channel is intended to display a 16:9 aspect ratio, click the 16:9 option, and then select the desired ARC setting. The selected ARC setting becomes the default ARC setting for any SD 4:3 clips (that do not have pre-defined ARC settings) loaded into that channel.

The available settings for a SD channel configured for a 16:9 aspect ratio are:

- **Default** — Uses the Pillar Box option to display the clip.
- **Anamorphic** — Stretches the clip in the horizontal dimension to fit the 16:9 frame.
- **Pillar Box** — Adds black bars on each side of the clip to fit the 16:9 frame.
- **Middle Cut** — Enlarges the clip on four sides to fit the 16:9 frame.
- **14:9 HD** — Changes the aspect ratio of the clip to 14:9.
- **21:9 HD** — Changes the aspect ratio of the clip to 21:9.



### SD 4:3 Aspect Ratio Output

If a channel is intended to display a 4:3 aspect ratio, click the 4:3 option, and then select the desired ARC setting. The selected ARC setting becomes the default ARC setting for any SD 16:9 clips (that do not have pre-defined ARC settings) loaded into that channel.

The available settings for a SD channel configured for a 4:3 aspect ratio are:

- **Default** — Uses the Letter Box option to display the clip.
- **Anamorphic** — Shrinks the clip in the horizontal dimension to fit the 4:3 frame.
- **Letter Box** — Adds black bars to the top and bottom of the clip to fit the 4:3 frame.
- **Center Cut** — Crops the sides of the clip to fit the 4:3 frame.
- **14:9 SD** — Changes the aspect ratio of the clip to 14:9.
- **21:9 SD** — Changes the aspect ratio of the clip to 21:9.

For SD clips loaded into SD channels, the aspect ratio conversion has been disabled. Whether the SD clips have the 16:9 or the 4:3 aspect ratio flag enabled, they will be played out of all SD configured channels without an aspect ratio conversion applied.

### HD Aspect Ratio Output

For channels configured to play out HD media, the aspect ratio of the video output is always 16:9.

Select the desired ARC setting from the list. The selected ARC setting becomes the default ARC setting for any SD 4:3 clips (that do not have pre-defined ARC settings) loaded into that channel.

The available settings for a HD channel configured for 16:9 aspect ratio are:

- **Default** — Uses the Pillar Box option to display the clip.
- **Anamorphic** — Stretches the clip in the horizontal dimension to fit the 16:9 frame.
- **Pillar Box** — Adds black bars on each side of the clip to fit the 16:9 frame.



- **Middle Cut** — Enlarges the clip on four sides to fit the 16:9 frame.
- **14:9 HD** — Changes the aspect ratio of the clip to 14:9.
- **21:9 HD** — Changes the aspect ratio of the clip to 21:9.

If an AFD flag is present on input, AFD-based ARC will be applied on playout as necessary. This will override the port based ARC settings automatically for media loaded into HD channels.

- b** Select the desired **Timecode Insert** check boxes (i.e., VITC and/or LTC). **Note:** LTC Support is currently not available.
- c** In the **Line Select** list, select the desired line for the VITC output (i.e., 10, 11, 12, 13, 14, 15, 16, 17, 18, 19, or 20).
- d** Select the **Duplicate line 0** check box if desired to add a duplicate line of the VITC output 2 lines later. For example, if you have VITC output on line 16, a duplicate of the output will appear on line 18.
- e** Select the **Legacy timecode display** check box to report a channel's current output timecode based on the start time of a currently playing clip instead of the embedded timecode within the clip.

### Record Format and ARC

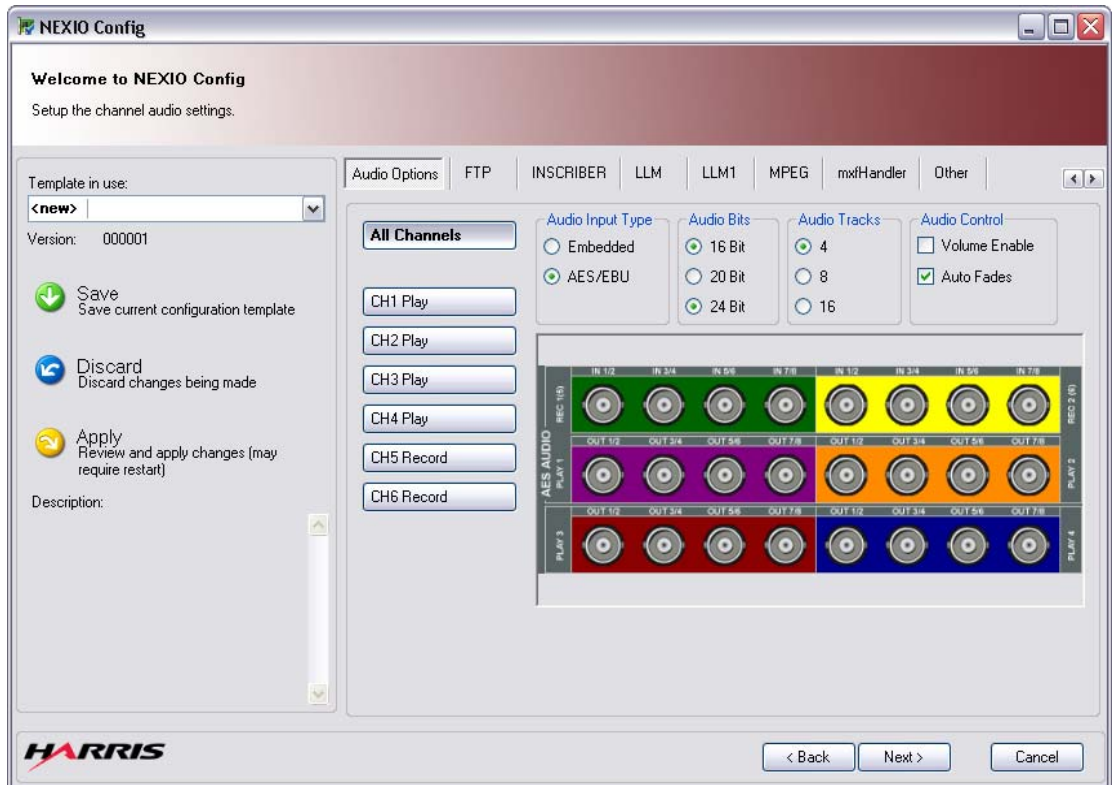
- a** In the **Format** list, select the appropriate record format.
- b** In the **Bit Rate (Mbps)** list, select the appropriate bit rate for the format.
- c** Click the appropriate **Record Aspect** option.
- d** Select the **Record VBI** check box if you want to record the VBI information.
- e** Click the appropriate **GOP** option, and select the **M** and **N** value if applicable.

See [Appendix A on page 51](#) for the [Record Format and ARC Settings](#) available in the [Video Options](#) window.



## Audio Options

The **Audio Options** window (Figure 2-11) allows you to select the audio type, audio bits, audio tracks, and audio control for your configuration.



**Figure 2-11** NEXIO Config — Audio Options

### To specify audio options

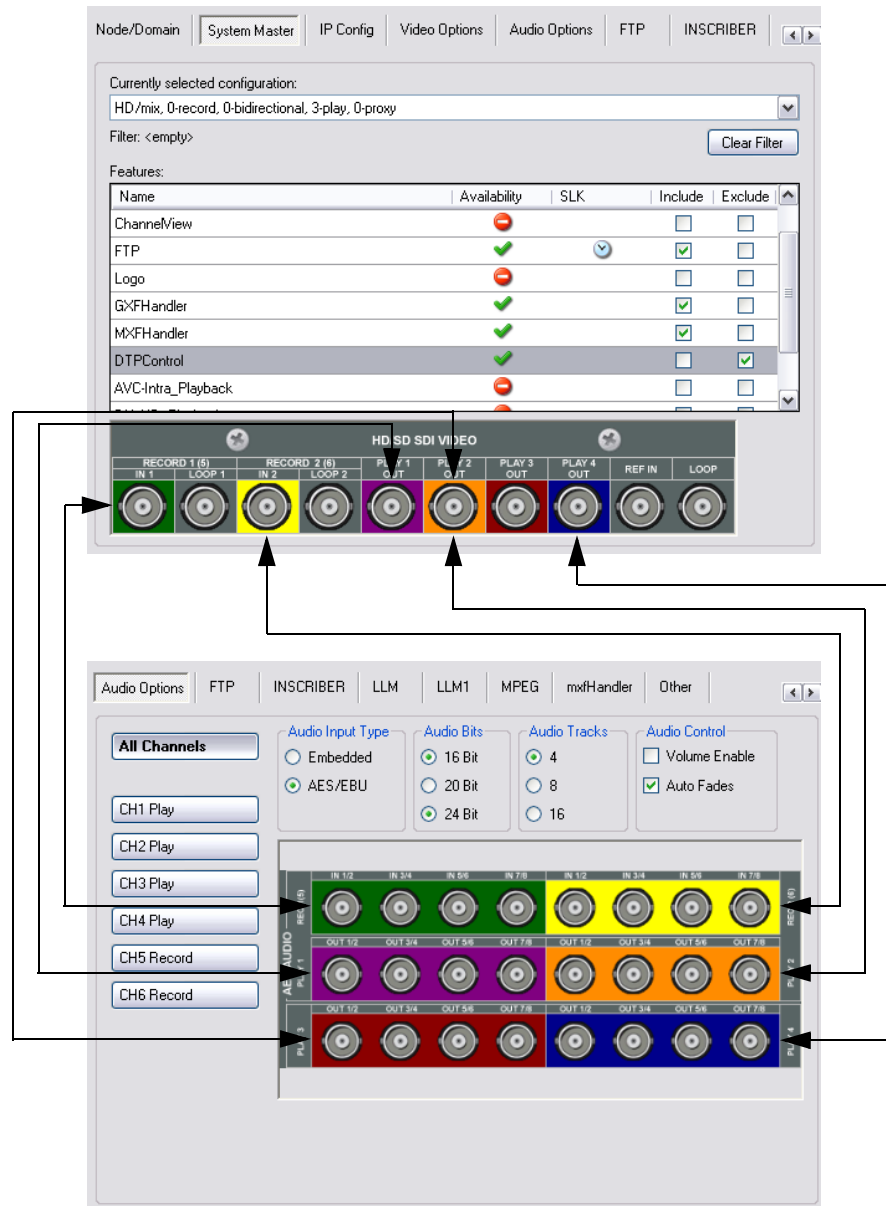
- 1 Click **All Channels** to set the audio configuration for all of the channels, or click the desired channel (e.g., **CH1 Play**) to configure a channel individually.
- 2 In the **Audio Input Type** area, click the desired input (i.e., Embedded or AES/EBU).



*Changes to the audio configuration affect input channels only. The output channels always output embedded and AES audio simultaneously.*

When the Audio Input Type is **AES/EBU**, the color of each video port in the System Master window is related to the corresponding audio ports in the Audio Options window (see Figure 2-12).





**Figure 2-12** Video and Audio Ports when AES/EBU is Selected

The [AES/EBU Audio Color Legend](#) on page 62 in [Appendix A](#) shows the color legend for each channel mode.



- 3 In the **Audio Bits** area, click the number of bits per sample (i.e., 16 Bit, 20 Bit, or 24 Bit).
- 4 In the **Audio Tracks** area, select the number of audio tracks (i.e., 4, 8, or 16).
- 5 In the **Audio Control** area, select the desired controls (i.e., Volume Enable to control the volume of the audio, and/or Audio Fades to create an automatic fade between clips).



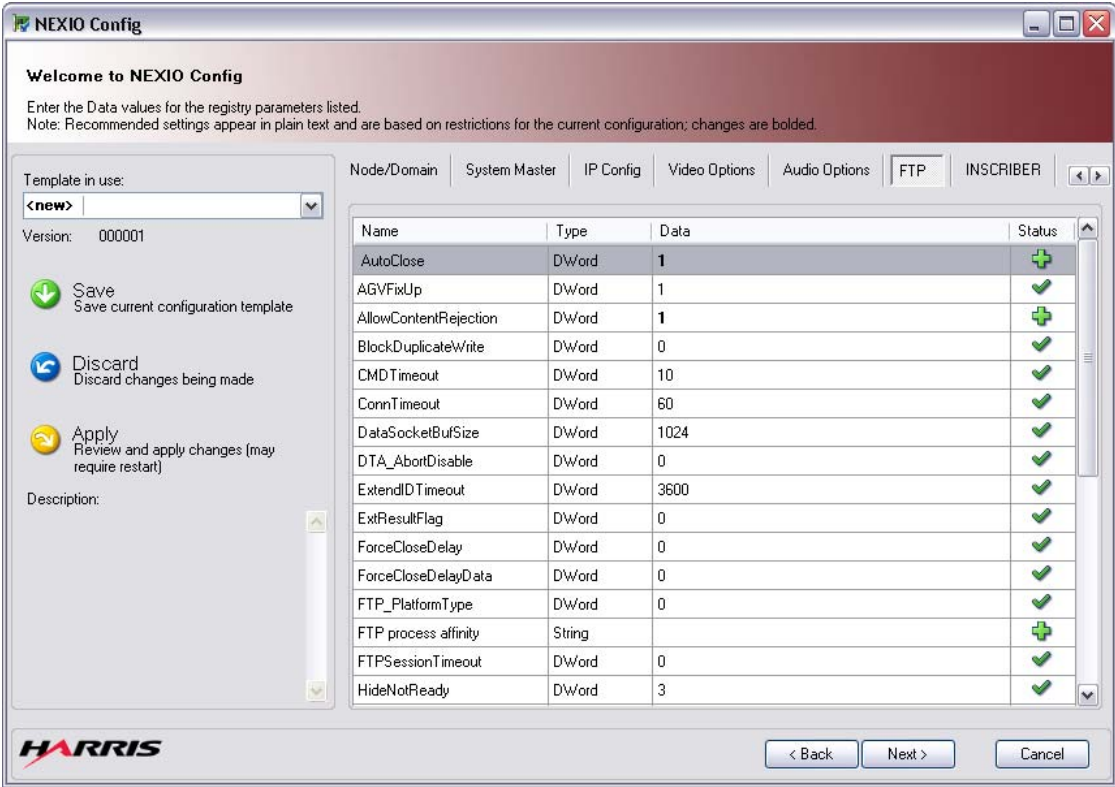
*If you have compressed audio (e.g., Dolby), clear the **Volume Enable** and **Auto Fades** check boxes and do not manually adjust the volume.*



**FTP** The NEXIO Config **FTP** window (Figure 2-13) allows you to view and change various FTP registry settings. The name, type, data value, and status of each parameter is shown.



**Do not change these settings unless you are instructed to do so by Harris BCD Support.**








**Figure 2-13** NEXIO Config — FTP

**To change FTP registry settings**

- 1 Double-click in the **Data** column of the registry setting that you want to change.
- 2 Type the new value for the registry setting. Changed values appear in bold.



The status of each parameter appears in the **Status** column. The status icons are described below:

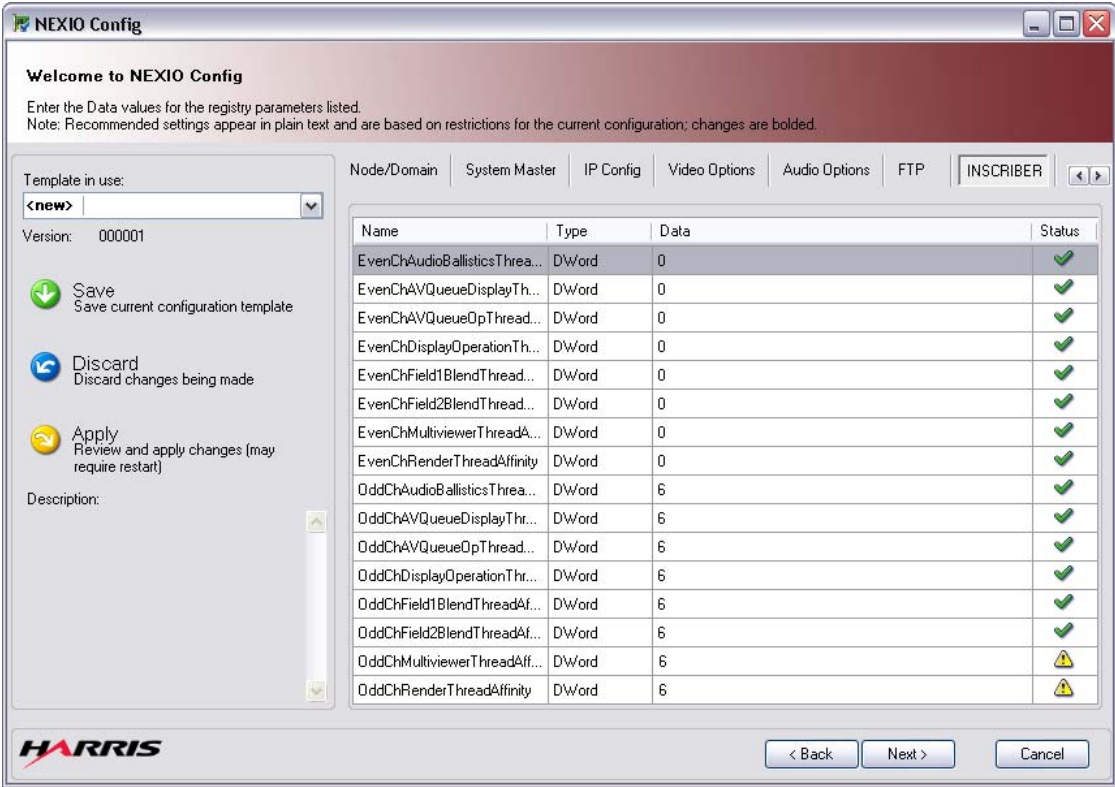
-  **green check mark** — indicates that the FTP parameter currently exists in the registry.
-  **green plus sign** — indicates that the FTP parameter is absent in the registry and will be created.
-  **red minus sign** — indicates that the FTP parameter will be deleted.
-  **purple question mark** — indicates that the FTP parameter has no meaning in the current configuration.
-  **yellow explanation mark** — indicates that the FTP parameter has been manually changed and does not meet the predefined rules.



**INSCRIBER** The NEXIO Config **INSCRIBER** window (Figure 2-14) allows you to view and change various registry settings that are used for ChannelView. The name, type, data value, and status of each parameter is shown.



**Do not change these settings unless you are instructed to do so by Harris BCD Support.**




**Figure 2-14** NEXIO Config — INSCRIBER


**To change INSCRIBER registry settings**


- 1 Double-click in the **Data** column of the registry setting that you want to change.
- 2 Type the new value for the registry setting. Changed values appear in bold.





The status of each parameter appears in the **Status** column. The status icons are described below:

 **green check mark** — indicates that the ChannelView parameter currently exists in the registry.

 **green plus sign** — indicates that the ChannelView parameter is absent in the registry and will be created.

 **red minus sign** — indicates that the ChannelView parameter will be deleted.

 **purple question mark** — indicates that the ChannelView parameter has no meaning in the current configuration.

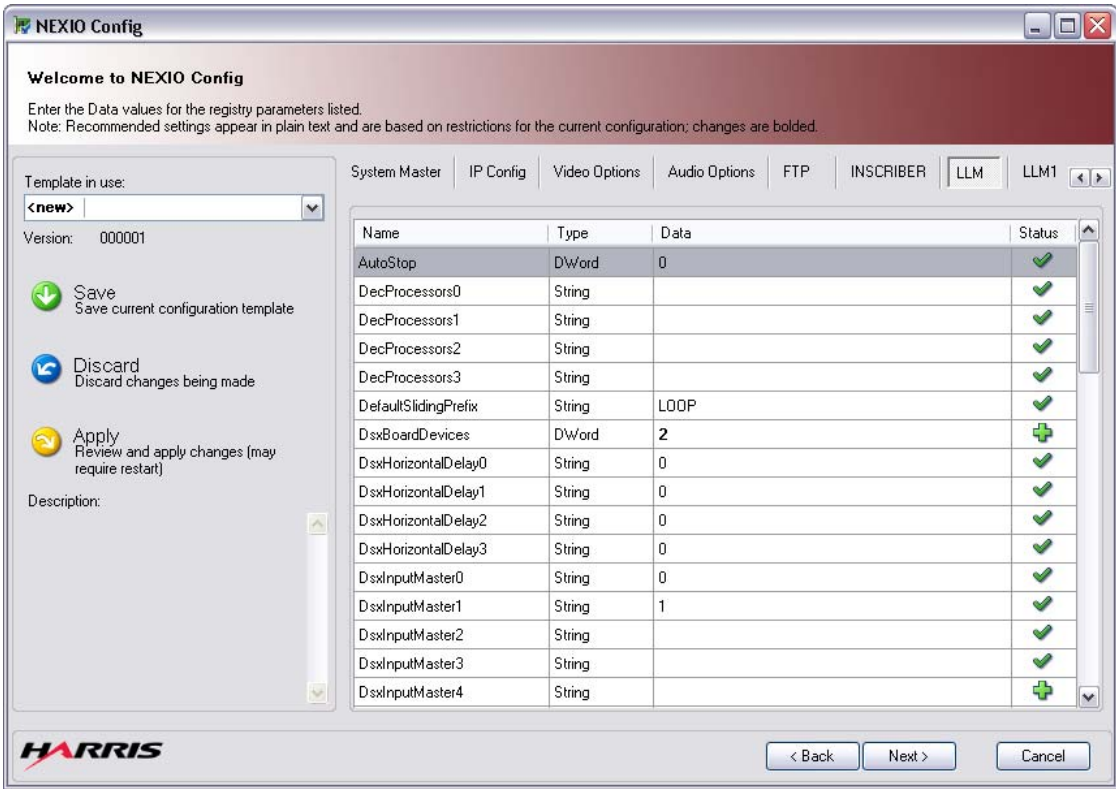
 **yellow explanation mark** — indicates that the ChannelView parameter has been manually changed and does not meet the predefined rules.



**LLM** The NEXIO Config **LLM** window (Figure 2-15) allows you to view and change various LLM registry settings. The name, type, data value, and status of each parameter is shown.



**Do not change these settings unless you are instructed to do so by Harris BCD Support.**








**Figure 2-15** NEXIO Config — LLM

**To change LLM registry settings**

- 1 Double-click in the **Data** column of the registry setting that you want to change.
- 2 Type the new value for the registry setting. Changed values appear in bold.




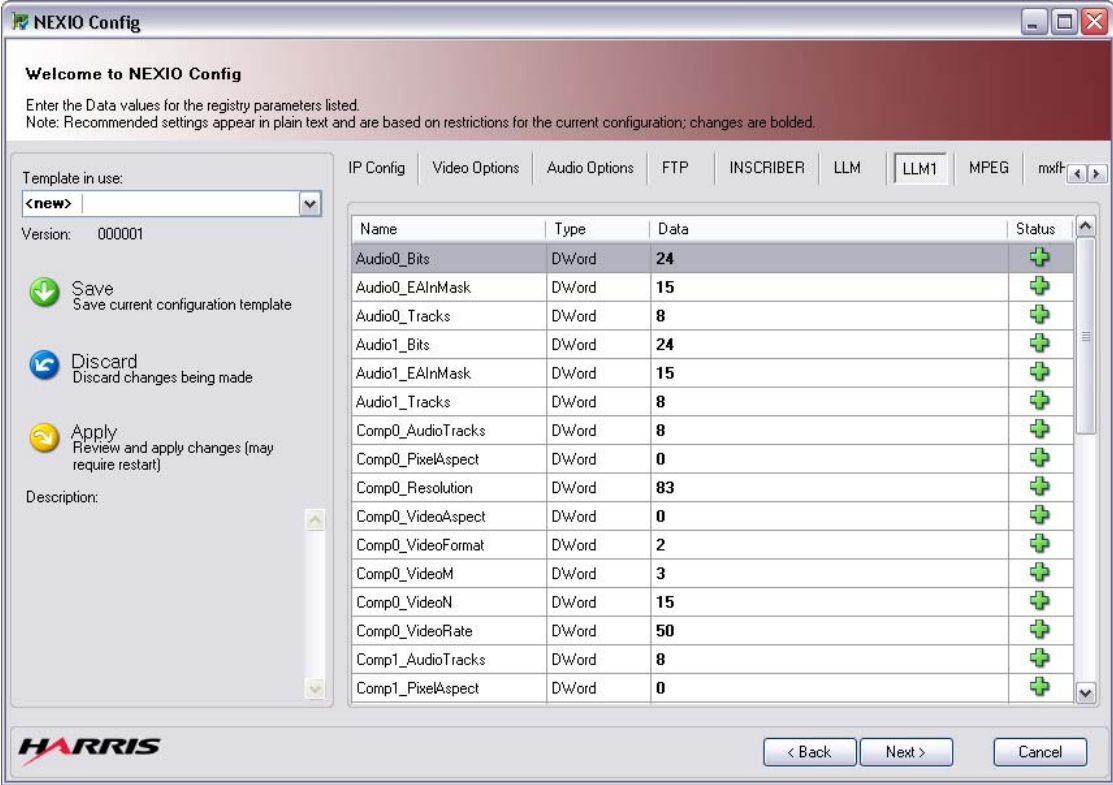
The status of each parameter appears in the **Status** column. The status icons are described below:

-  **green check mark** — indicates that the LLM parameter currently exists in the registry.
-  **green plus sign** — indicates that the LLM parameter is absent in the registry and will be created.
-  **red minus sign** — indicates that the LLM parameter will be deleted.
-  **purple question mark** — indicates that the LLM parameter has no meaning in the current configuration.
-  **yellow explanation mark** — indicates that the LLM parameter has been manually changed and does not meet the predefined rules.



**LLM1** The NEXIO Config **LLM1** window (Figure 2-16) allows you to view and change various LLM1 registry settings. The name, type, data value, and status of each parameter is shown.

 **Do not change these settings unless you are instructed to do so by Harris BCD Support.**








**Figure 2-16** NEXIO Config — LLM1

**To change LLM1 registry settings**

- 1 Double-click in the **Data** column of the registry setting that you want to change.
- 2 Type the new value for the registry setting. Changed values appear in bold.



The status of each parameter appears in the **Status** column. The status icons are described below:

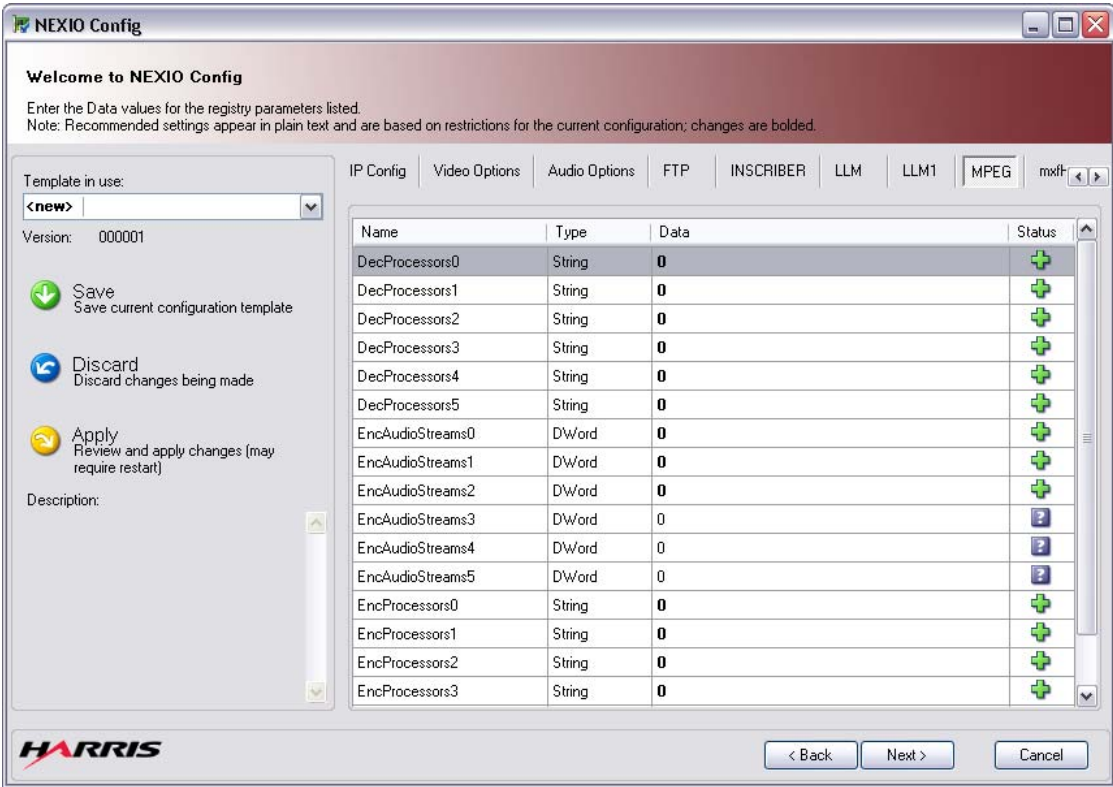
-  **green check mark** — indicates that the LLM1 parameter currently exists in the registry.
-  **green plus sign** — indicates that the LLM1 parameter is absent in the registry and will be created.
-  **red minus sign** — indicates that the LLM1 parameter will be deleted.
-  **purple question mark** — indicates that the LLM1 parameter has no meaning in the current configuration.
-  **yellow explanation mark** — indicates that the LLM1 parameter has been manually changed and does not meet the predefined rules.



**MPEG** The NEXIO Config **MPEG** window (Figure 2-17) allows you to view and change various MPEG registry settings. The name, type, data value, and status of each parameter is shown.



**Do not change these settings unless you are instructed to do so by Harris BCD Support.**








**Figure 2-17** NEXIO Config — MPEG

**To change MPEG registry settings**

- 1 Double-click in the **Data** column of the registry setting that you want to change.
- 2 Type the new value for the registry setting. Changed values appear in bold.



The status of each parameter appears in the **Status** column. The status icons are described below:

-  **green check mark** — indicates that the MPEG parameter currently exists in the registry.
-  **green plus sign** — indicates that the MPEG parameter is absent in the registry and will be created.
-  **red minus sign** — indicates that the MPEG parameter will be deleted.
-  **purple question mark** — indicates that the MPEG parameter has no meaning in the current configuration.
-  **yellow explanation mark** — indicates that the MPEG parameter has been manually changed and does not meet the predefined rule.

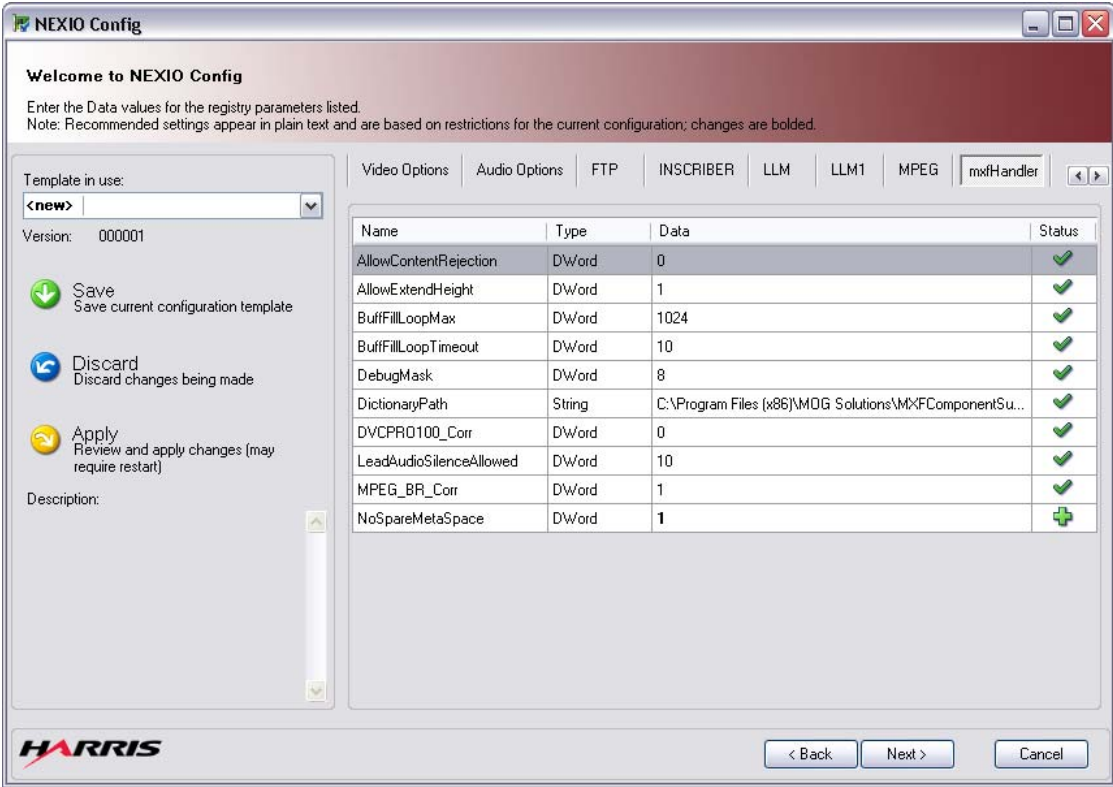


mxfHandler

The NEXIO Config **mxfHandler** window (Figure 2-18) allows you to view and change various mxfHandler registry settings. The name, type, data value, and status of each parameter is shown.



**Do not change these settings unless you are instructed to do so by Harris BCD Support.**








**Figure 2-18** NEXIO Config — mxfHandler

**To change mxfHandler registry settings**

- 1 Double-click in the **Data** column of the registry setting that you want to change.
- 2 Type the new value for the registry setting. Changed values appear in bold.



The status of each parameter appears in the **Status** column. The status icons are described below:

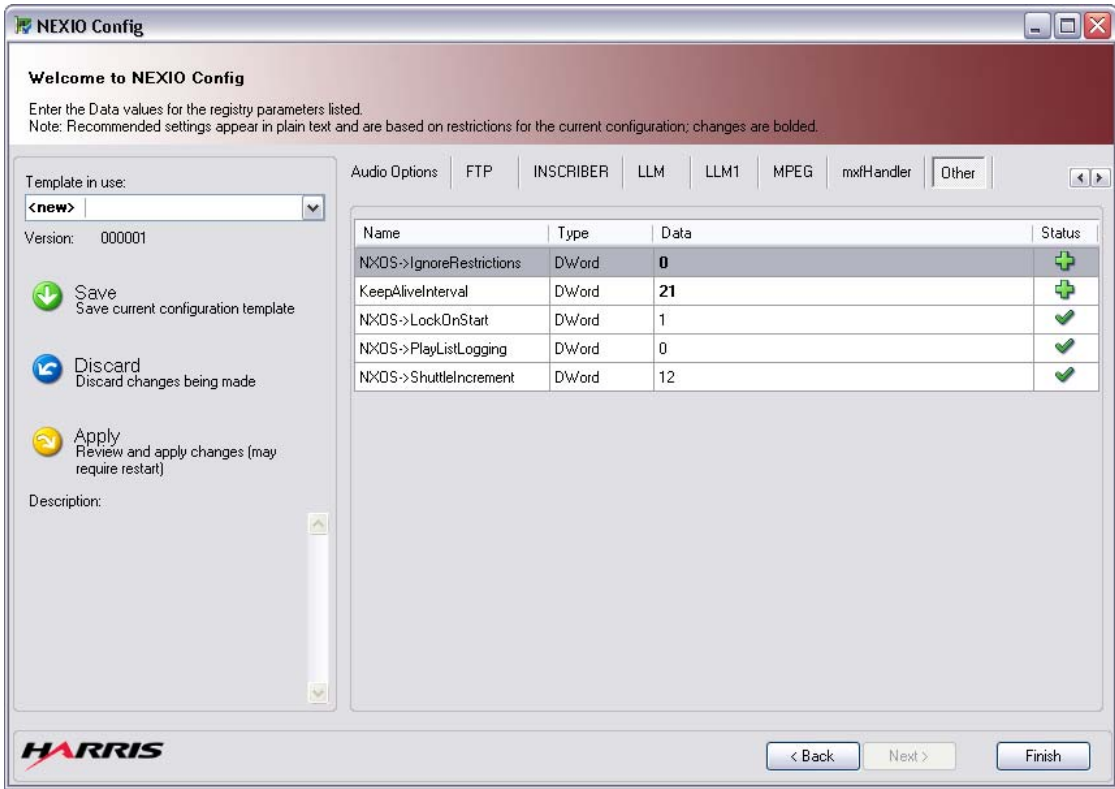
-  **green check mark** — indicates that the mxfHandler parameter currently exists in the registry.
-  **green plus sign** — indicates that the mxfHandler parameter is absent in the registry and will be created.
-  **red minus sign** — indicates that the mxfHandler parameter will be deleted.
-  **purple question mark** — indicates that the mxfHandler parameter has no meaning in the current configuration.
-  **yellow explanation mark** — indicates that the mxfHandler parameter has been manually changed and does not meet the predefined rules.



**Other** The NEXIO Config **Other** window (Figure 2-19) allows you to view and change various additional registry settings. The name, type, data value, and status of each parameter is shown.



**Do not change these settings unless you are instructed to do so by Harris BCD Support.**




**Figure 2-19** NEXIO Config — Other


**To change Other registry settings**


- 1 Double-click in the **Data** column of the registry setting that you want to change.
- 2 Type the new value for the registry setting. Changed values appear in bold.





The status of each parameter appears in the **Status** column. The status icons are described below:

 **green check mark** — indicates that the parameter currently exists in the registry.

 **green plus sign** — indicates that the parameter is absent in the registry and will be created.

 **red minus sign** — indicates that the parameter will be deleted.

 **purple question mark** — indicates that the parameter has no meaning in the current configuration.

 **yellow explanation mark** — indicates that the parameter has been manually changed and does not meet the predefined rules.







# A Channel Configurations, Record Format Settings, and AES/EBU Color Legend

---

## Overview

Appendix A provides detailed tables for the following:

- [Channel Configurations and Features on page 51](#)
- [Record Format and ARC Settings on page 60](#)
- [AES/EBU Audio Color Legend on page 62](#)

---

## Channel Configurations and Features

In the [System Master](#) window, you can select the **Channel Configuration** and you can include or exclude **Features** for that configuration.

The following tables show the available channel configurations and the available features for:

- [2 Channel Modes without Expander Client](#)
- [3 Channel Modes without Expander Client](#)
- [4 Channel Modes without Expander Client](#)
- [6 Channel Modes without Expander Client](#)
- [2 Channel Modes with Expander Client](#)
- [3 Channel Modes with Expander Client](#)
- [4 Channel Modes with Expander Client](#)
- [6 Channel Modes with Expander Client](#)



*Expander Client is used for systems that are connected via Ethernet (e.g., MIOH systems), as opposed to via direct connection.*





*The Logo, DNxHD Playback, and 1080 Progressive features are not available in this release of NEXIO Config and are scheduled for future releases.*

## 2 Channel Modes without Expander Client

Table A-1 shows the channel configurations and available features for 2 Channel modes without the Expander Client option.

**Table A-1** Channel Configurations and Available Features for 2 Channel Modes without Expander Client

Channel Mode/Features	Channel View	FTP	GXF Handler	MXF Handler	DTP Control	AVC-Intra Playback	HD DVCPro 100
HD/mix, 0-record, 0-bidirectional, 2-play, 0-proxy		✓				✓	✓
HD/mix, 0-record, 1-bidirectional, 1-play, 0-proxy	✓	✓	✓	✓	✓		✓
HD/mix, 0-record, 1-bidirectional, 1-play, 1-proxy	✓	✓	✓	✓	✓		✓
HD/mix, 0-record, 2-bidirectional, 0-play, 0-proxy	✓	✓	✓	✓	✓		✓
HD/mix, 0-record, 2-bidirectional, 0-play, 2-proxy							
HD/mix, 2-record, 0-bidirectional, 0-play, 2-proxy							
SD-only, 0-record, 0-bidirectional, 2-play, 0-proxy	✓	✓	✓	✓	✓		
SD-only, 0-record, 1-bidirectional, 1-play, 0-proxy	✓	✓	✓	✓	✓		
SD-only, 0-record, 1-bidirectional, 1-play, 1-proxy	✓	✓	✓	✓	✓		
SD-only, 0-record, 2-bidirectional, 0-play, 0-proxy	✓	✓	✓	✓	✓		
SD-only, 0-record, 2-bidirectional, 0-play, 2-proxy	✓	✓	✓	✓	✓		
SD-only, 2-record, 0-bidirectional, 0-play, 2-proxy	✓	✓	✓	✓	✓		



### 3 Channel Modes without Expander Client

Table A-2 shows the channel configurations and available features for 3 Channel modes without the Expander Client option.

**Table A-2** Channel Configurations and Available Features for 3 Channel Modes without Expander Client

Channel Mode/Features	Channel View	FTP	GXF Handler	MXF Handler	DTP Control	AVC-Intra Playback	HD DVCPro 100
HD/mix, 0-record, 0-bidirectional, 3-play, 0-proxy	✓	✓	✓	✓	✓		✓
HD/mix, 0-record, 1-bidirectional, 2-play, 0-proxy	✓	✓	✓	✓	✓		✓
HD/mix, 1-record, 0-bidirectional, 2-play, 0-proxy	✓	✓	✓	✓	✓		✓
HD/mix, 1-record, 0-bidirectional, 2-play, 0-proxy, No E-E	✓	✓	✓	✓	✓		✓
HD/mix, 1-record, 0-bidirectional, 2-play, 1-proxy							✓
SD-only, 0-record, 0-bidirectional, 3-play, 0-proxy	✓	✓	✓	✓	✓		
SD-only, 1-record, 0-bidirectional, 2-play, 0-proxy	✓	✓	✓	✓	✓		
SD-only, 1-record, 0-bidirectional, 2-play, 0-proxy, No E-E	✓	✓	✓	✓	✓		
SD-only, 1-record, 0-bidirectional, 2-play, 1-proxy	✓	✓	✓	✓	✓		



## 4 Channel Modes without Expander Client

Table A-3 shows the channel configurations and available features for 4 Channel modes without the Expander Client option.

**Table A-3** Channel Configurations and Available Features for 4 Channel Modes without Expander Client

Channel Mode/Features	Channel View	FTP	GXF Handler	MXF Handler	DTP Control	AVC-Intra Play-back	HD DVCPro 100
HD/mix, 0-record, 0-bidirectional, 4-play, 0-proxy	✓	✓					✓
HD/mix, 1-record, 0-bidirectional, 3-play, 0-proxy	✓	✓					✓
HD/mix, 2-record, 0-bidirectional, 2-play, 0-proxy							✓
SD-only, 0-record, 0-bidirectional, 4-play, 0-proxy	✓	✓	✓	✓	✓		
SD-only, 0-record, 2-bidirectional, 2-play, 0-proxy	✓	✓	✓	✓	✓		
SD-only, 0-record, 2-bidirectional, 2-play, 2-proxy	✓	✓	✓	✓	✓		
SD-only, 1-record, 0-bidirectional, 3-play, 0-proxy	✓	✓	✓	✓	✓		
SD-only, 2-record, 0-bidirectional, 2-play, 0-proxy	✓	✓	✓	✓	✓		



## 6 Channel Modes without Expander Client

Table A-4 shows the channel configurations and available features for 6 Channel modes without the Expander Client option.

**Table A-4** Channel Configurations and Available Features for 6 Channel Modes without Expander Client

Channel Mode/Features	Channel View	FTP	GXF Handler	MXF Handler	DTP Control	AVC-Intra Playback	HD DVCPro 100
SD-only, 2-record, 0-bidirectional, 4-play, 0-proxy	✓	✓	✓	✓	✓		
SD-only, 2-record, 0-bidirectional, 4-play, 0-proxy, No E-E	✓	✓	✓	✓	✓		
SD-only, 2-record, 0-bidirectional, 4-play, 2-proxy	✓	✓	✓	✓	✓		
SD-only, 2-record, 0-bidirectional, 4-play, 2-proxy, No E-E	✓	✓	✓	✓	✓		



## 2 Channel Modes with Expander Client

Table A-5 shows the channel configurations and available features for 2 Channel modes with the Expander Client option.

**Table A-5** Channel Configurations and Available Features for 2 Channel Modes with Expander Client

Channel Mode/Features	Channel View	FTP	GXF Handler	MXF Handler	DTP Control	AVC-Intra Play-back	HD DVCPro 100
HD/mix, 0-record, 0-bidirectional, 2-play, 0-proxy						✓	✓
HD/mix, 0-record, 1-bidirectional, 1-play, 0-proxy	✓						✓
HD/mix, 0-record, 1-bidirectional, 1-play, 1-proxy	✓						✓
HD/mix, 0-record, 2-bidirectional, 0-play, 0-proxy	✓						✓
HD/mix, 0-record, 2-bidirectional, 0-play, 2-proxy							
HD/mix, 2-record, 0-bidirectional, 0-play, 2-proxy							
SD-only, 0-record, 0-bidirectional, 2-play, 0-proxy	✓						
SD-only, 0-record, 1-bidirectional, 1-play, 0-proxy	✓						
SD-only, 0-record, 1-bidirectional, 1-play, 1-proxy	✓						
SD-only, 0-record, 2-bidirectional, 0-play, 0-proxy	✓						
SD-only, 0-record, 2-bidirectional, 0-play, 2-proxy	✓						
SD-only, 2-record, 0-bidirectional, 0-play, 2-proxy	✓						



### 3 Channel Modes with Expander Client

Table A-6 shows the channel configurations and available features for 3 Channel modes with the Expander Client option.

**Table A-6** Channel Configurations and Available Features for 3 Channel Modes with Expander Client

Channel Mode/Features	Channel View	FTP	GXF Handler	MXF Handler	DTP Control	AVC-Intra Playback	HD DVCPro 100
HD/mix, 0-record, 0-bidirectional, 3-play, 0-proxy	✓						✓
HD/mix, 0-record, 1-bidirectional, 2-play, 0-proxy	✓						✓
HD/mix, 1-record, 0-bidirectional, 2-play, 0-proxy	✓						✓
HD/mix, 1-record, 0-bidirectional, 2-play, 0-proxy, No E-E	✓						✓
HD/mix, 1-record, 0-bidirectional, 2-play, 1-proxy							✓
SD-only, 0-record, 0-bidirectional, 3-play, 0-proxy	✓						
SD-only, 1-record, 0-bidirectional, 2-play, 0-proxy	✓						
SD-only, 1-record, 0-bidirectional, 2-play, 0-proxy, No E-E	✓						
SD-only, 1-record, 0-bidirectional, 2-play, 1-proxy	✓						



## 4 Channel Modes with Expander Client

Table A-7 shows the channel configurations and available features for 4 Channel modes with the Expander Client option.

**Table A-7** Channel Configurations and Available Features for 4 Channel Modes with Expander Client

Channel Mode/Features	Channel View	FTP	GXF Handler	MXF Handler	DTP Control	AVC-Intra Playback	HD DVCPro 100
HD/mix, 0-record, 0-bidirectional, 4-play, 0-proxy	✓						✓
HD/mix, 1-record, 0-bidirectional, 3-play, 0-proxy	✓						✓
HD/mix, 2-record, 0-bidirectional, 2-play, 0-proxy							✓
SD-only, 0-record, 0-bidirectional, 4-play, 0-proxy	✓						
SD-only, 0-record, 2-bidirectional, 2-play, 0-proxy	✓						
SD-only, 0-record, 2-bidirectional, 2-play, 2-proxy	✓						
SD-only, 1-record, 0-bidirectional, 3-play, 0-proxy	✓						
SD-only, 2-record, 0-bidirectional, 2-play, 0-proxy	✓						



## 6 Channel Modes with Expander Client

Table A-8 shows the channel configurations and available features for 6 Channel modes with the Expander Client option.

**Table A-8** Channel Configurations and Available Features for 6 Channel Modes with Expander Client

Channel Mode/Features	Channel View	FTP	GXF Handler	MXF Handler	DTP Control	AVC-Intra Playback	HD DVCPro 100
SD-only, 2-record, 0-bidirectional, 4-play, 0-proxy	✓						
SD-only, 2-record, 0-bidirectional, 4-play, 0-proxy, No E-E	✓						
SD-only, 2-record, 0-bidirectional, 4-play, 2-proxy	✓						
SD-only, 2-record, 0-bidirectional, 4-play, 2-proxy, No E-E	✓						



Record Format and ARC Settings

In the [Video Options](#) window you can set the **Record Format** and **ARC** settings.

[Table A-9](#), [Table A-10](#), and [Table A-11](#) show the available format settings for SD, HD direct connect, and HD Media Host configurations.

Table A-9 Available SD Format Settings

Recording Format	Bit Rate (Mbps)	GOP (Group of Pictures)	M	N
MPEG 4:2:0	4, 6, 8, 10, 12, 14, 15	I Frame	1	1
	4, 6, 8, 10, 12, 14, 15	IP	1	1,2, 3, 4. 5, 6, 7, 8, 9, 10, 11,12, 13, 14, 15, 16
	4, 6, 8, 10, 12, 14, 15	IBP	2	2, 4, 6, 8, 10, 12, 14, 16
			3	3, 6, 9, 12, 15
MPEG 4:2:2	10, 12, 14, 15, 18, 22, 26, 30, 34, 38, 42, 46, 50	I Frame	1	1
	10, 12, 14, 15, 18, 22, 26, 30, 34, 38, 42, 46, 50	IP	1	1, 2, 3, 4. 5, 6, 7, 8, 9, 10, 11,12, 13, 14, 15, 16
	10, 12, 14, 15, 18, 22, 26, 30, 34, 38, 42, 46, 50	IBP	2	2, 4, 6, 8, 10, 12, 14, 16
			3	3, 6, 9, 12, 15
IMX	30, 40, 50	I Frame	1	1
DVCam	25	I Frame	1	1
DVCPRO 25	25	I Frame	1	1
DVCPRO 50	50	I Frame	1	1

*\*Applies to PAL (625) only. Same as DVCPRO 25 for NTSC (525).*



**Table A-10** Available HD 1080i and 720p Format Settings for Configurations using Direct Connection

Recording Format	Bit Rate (Mbps)	GOP (Group of Pictures)	M	N
MPEG 4:2:0	50, 80, 100	I Frame	1	1
	50, 60, 70, 80	IBP	3	15
MPEG 4:2:2	50, 70, 80, 100, 120, 150	I Frame	1	1
	50, 70, 80	IBP	3	15
DVCPRO HD	100	I Frame	1	1
XDCAM HD*	35	IBP	3	12
XDCAM HD 4:2:2	50	IBP	3	12
XDCAM EX	35	IBP	3	12

\* Not available in 720p

**Table A-11** Available HD 1080i and 720p Format Settings for 3 Channel and 4 Channel Configurations using Media Host

Recording Format	Bit Rate (Mbps)	GOP (Group of Pictures)	M	N
MPEG 4:2:0	50, 80, 100*	I Frame	1	1
	50, 60, 70, 80	IBP	3	15
MPEG 4:2:2	50, 70, 80, 100*	I Frame	1	1
	50, 70, 80	IBP	3	15
DVCPRO HD*	100	I Frame	1	1
XDCAM HD**	35	IBP	3	12
XDCAM HD 4:2:2	50	IBP	3	12
XDCAM EX	35	IBP	3	12

\*3 Channel configuration only

\*\*Available in 1080i only



# AES/EBU Audio Color Legend

In the [Audio Options](#) window you can select the Audio Input Type. When the Audio Input Type is AES/EBU, the color of each video port in the [System Master](#) window is related to the corresponding audio ports in the Audio Options window (see [Figure 2-12 on page 35](#)).

[Table A-12](#) shows the color legend for each channel mode. Notice that if the channel is bidirectional the color is the same for record and play. There are three different channel types:

- **record** — the channel does not support playout
- **bidirectional** — the channel can either play or record at any time
- **play** — the channel does not support recording

**Table A-12** Color Legend

# of Channels	Channel Mode	RECORD 1 (5)	RECORD 2 (6)	PLAY 1	PLAY 2	PLAY 3	PLAY 4
2 CH	HD/mix and SD-only, 0-record, 0-bidirectional, 2-play, 0-proxy			CH1 (purple)	CH2 (orange)		
	HD/mix and SD-only, 0-record, 1-bidirectional, 1- play, 0-proxy	CH1 (purple)		CH1 (purple)	CH2 (orange)		
	HD/mix and SD-only, 0-record, 1-bidirectional, 1-play, 1-proxy	CH1 (purple)		CH1 (purple)	CH2 (orange)		
	HD/mix and SD-only, 0-record, 2-bidirectional, 0-play, 0-proxy	CH1 (purple)	CH2 (orange)	CH1 (purple)	CH2 (orange)		
	HD/mix and SD-only, 0-record, 2-bidirectional, 0-play, 2 proxy	CH1 (purple)	CH2 (orange)	CH1 (purple)	CH2 (orange)		
	HD/mix and SD-only, 2-record, 0-bidirectional, 0-play, 2-proxy	CH1 (purple)	CH2 (orange)				



**Table A-12** Color Legend

# of Channels	Channel Mode	RECORD 1(5)	RECORD 2 (6)	PLAY 1	PLAY 2	PLAY 3	PLAY 4
3 CH	HD/mix and SD-only, 0-record, 0-bidirectional, 3-play, 0-proxy			CH1 (purple)	CH2 (orange)	CH3 (red)	
	HD/mix, 0-record, 1-bidirectional, 2-play, 0-proxy	CH1 (purple)		CH1 (purple)	CH2 (orange)	CH3 (red)	
	HD/mix and SD-only, 1-record, 0-bidirectional, 2-play, 0-proxy	CH3 (red)		CH1 (purple)	CH2 (orange)		
	HD/mix and SD-only, 1-record, 0-bidirectional, 2-play, 1-proxy	CH3 (red)		CH1 (purple)	CH2 (orange)		
4 CH	HD/mix and SD-only, 0-record, 0-bidirectional, 4-play, 0-proxy			CH1 (purple)	CH2 (orange)	CH3 (red)	CH4 (blue)
	SD-only, 0-record, 2-bidirectional, 2-play, 0-proxy	CH1 (purple)	CH2 (orange)	CH1 (purple)	CH2 (orange)	CH3 (red)	CH4 (blue)
	SD-only, 0-record, 2-bidirectional, 2-play, 2 proxy	CH1 (purple)	CH2 (orange)	CH1 (purple)	CH2 (orange)	CH3 (red)	CH4 (blue)
	HD/mix and SD-only, 1-record, 0-bidirectional, 3-play, 0-proxy	CH1 (purple)		CH2 (orange)	CH3 (red)	CH4 (blue)	
	HD/mix and SD-only, 2-record, 0-bidirectional, 2-play, 0-proxy	CH3 (red)	CH4 (blue)	CH1 (purple)	CH2 (orange)		
6 CH	SD-only, 2-record, 0-bidirectional, 4-play, 0-proxy	CH5 (green)	CH6 (yellow)	CH1 (purple)	CH2 (orange)	CH3 (red)	CH4 (blue)
	SD-only, 2-record, 0-bidirectional, 4-play, 2-proxy	CH5 (green)	CH6 (yellow)	CH1 (purple)	CH2 (orange)	CH3 (red)	CH4 (blue)







# Index

## A

- AES/EBU 33, 62
- anamorphic 30, 31
- ARC settings 60
- audio configuration 33
- audio input 33
- audio options 33, 62

## B

- bidirectional 62
- bit rate (Mbps) 32

## C

- center cut 31
- changing configuration templates 19
- channel configuration 29
- closed captioning 29
- configuration templates 19
  - changing 19
  - discarding 19
  - saving 19
- customer support 9

## D

- discarding configuration templates 19
- documents
  - purchasing 7

## F

- feature availability 24
- features 23
- finding information 2
- firmware information 22

## G

- GOP 32

## H

- hardware information 22
- high-res network server (MIOH) 25

## I

- identification 22
- inserting timecode 32
- installing NEXIO Config 11
- intended audience 1

## L

- legacy timecode display 32
- letter box 31
- license
  - SLK 18
- LLM domain and node settings 25
- low-res network server (PRXH) 25



**M**

- manuals
  - purchasing 7
- middle cut 30, 32
- MIOH 25

**N**

- network settings 26
- NEXIO Config windows
  - Audio Options 33
  - FTP 36
  - INSCRIBER 38
  - IP Config 25
  - LLM 40
  - LLM1 42
  - MPEG 44
  - mxHandler 46
  - Node/Domain 22
  - Other 48
  - System Master 23
  - Video Options 28
- node information 22

**P**

- pillar box 30, 31
- platform information 22
- play 62
- play format and ARC 30
- PRXH 25
- purchasing documents 7

**R**

- record 62
- record format 60

- resolution 30

**S**

- saving configuration templates 19
- server and order configuration 25
- server name
  - changing 26
- SLK 18
- software information 22
- software license key 18
- starting NEXIO Config 18
- support 9
- system features 23

**T**

- technical support 9
- templates
  - changing 19
  - discarding 19
  - saving 19

**U**

- user guides
  - purchasing 7

**V**

- VBI 29
- video options 28, 60
- video standard 29

**W**

- writing conventions 2







Harris is a registered trademark of Harris Corporation. Trademarks and tradenames are the property of their respective companies.



Broadcast Communications  
4393 Digital Way | Mason, OH USA 45040 | Tel: 1 (513) 459 3400  
[www.broadcast.harris.com](http://www.broadcast.harris.com)

Copyright © 2009 Harris Corporation  
Part Number: 175-100142-00